

CLH2 rabbit pAb

Cat No.:ES17375

For research use only

Overview

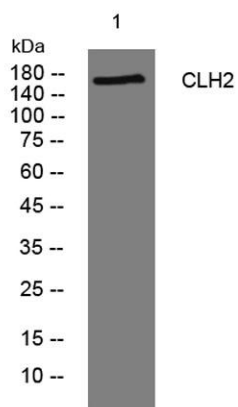
Product Name	CLH2 rabbit pAb
Host species	Rabbit
Applications	WB
Species Cross-Reactivity	Human;Rat;Mouse;
Recommended dilutions	WB 1: 500-2000
Immunogen	Synthesized peptide derived from human CLH2 AA range: 893-943
Specificity	This antibody detects endogenous levels of CLH2 at Human
Formulation	Liquid in PBS containing 50% glycerol, 0.5% BSA and 0.02% sodium azide.
Storage	Store at -20°C. Avoid repeated freeze-thaw cycles.
Protein Name	CLH2
Gene Name	CLTCL1 CLH22 CLTCL CLTD
Cellular localization	Cytoplasmic vesicle membrane ; Peripheral membrane protein ; Cytoplasmic side . Membrane, coated pit ; Peripheral membrane protein ; Cytoplasmic side . Cytoplasmic face of coated pits and vesicles. .
Purification	The antibody was affinity-purified from rabbit antiserum by affinity-chromatography using epitope-specific immunogen.
Clonality	Polyclonal
Concentration	1 mg/ml
Observed band	
Human Gene ID	8218
Human Swiss-Prot Number	P53675
Alternative Names	
Background	This gene is a member of the clathrin heavy chain family and encodes a major protein of the polyhedral coat of coated pits and vesicles. Chromosomal aberrations involving this gene are associated with meningioma, DiGeorge syndrome,





ELK Biotechnology

and velo-cardio-facial syndrome. Multiple transcript variants encoding different isoforms have been found for this gene. [provided by RefSeq, Jun 2009],



Western blot analysis of lysates from A431 cells, primary antibody was diluted at 1:1000, 4°over night



+86-27-59760950

ELKbio@ELKbiotech.com

www.elkbiotech.com

23-2, No.388 Gaoxin 2nd Road,Wuhan East Lake Hi-tech Development Zone, Hubei , P.R.C