

CLIC5 rabbit pAb

Cat No.:ES17374

For research use only

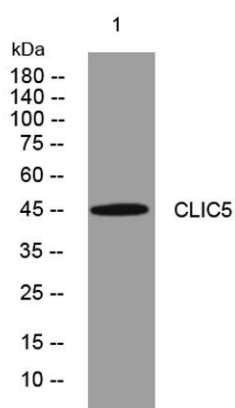
Overview

| | |
|--------------------------|---|
| Product Name | CLIC5 rabbit pAb |
| Host species | Rabbit |
| Applications | WB |
| Species Cross-Reactivity | Human; Mouse;Rat |
| Recommended dilutions | WB 1: 500-2000 |
| Immunogen | Synthesized peptide derived from human CLIC5 AA range: 156-206 |
| Specificity | This antibody detects endogenous levels of CLIC5 at Human/Mouse/Rat |
| Formulation | Liquid in PBS containing 50% glycerol, 0.5% BSA and 0.02% sodium azide. |
| Storage | Store at -20°C. Avoid repeated freeze-thaw cycles. |
| Protein Name | CLIC5 |
| Gene Name | CLIC5 |
| Cellular localization | [Isoform 1]: Cytoplasm, cytoskeleton . Cytoplasm, cell cortex . Membrane ; Single-pass membrane protein . Apical cell membrane ; Single-pass membrane protein . Cytoplasm . Associates with the cortical actin cytoskeleton (PubMed:10793131, PubMed:15184393). |
| Purification | The antibody was affinity-purified from rabbit antiserum by affinity-chromatography using epitope-specific immunogen. |
| Clonality | Polyclonal |
| Concentration | 1 mg/ml |
| Observed band | |
| Human Gene ID | 53405 |
| Human Swiss-Prot Number | Q9NZA1 |
| Alternative Names | |
| Background | This gene encodes a member of the chloride intracellular channel (CLIC) family of chloride ion channels. The encoded protein associates with actin-based cytoskeletal structures and may play a |





role in multiple processes including hair cell stereocilia formation, myoblast proliferation and glomerular podocyte and endothelial cell maintenance. Alternatively spliced transcript variants encoding multiple isoforms have been observed for this gene. [provided by RefSeq, Dec 2011],



Western blot analysis of lysates from HeLa cells, primary antibody was diluted at 1:1000, 4°over night

