

# CLLU1 rabbit pAb

Cat No.:ES17373

For research use only

## Overview

Product Name	CLLU1 rabbit pAb
Host species	Rabbit
Applications	WB
Species Cross-Reactivity	Human;Rat;Mouse;
Recommended dilutions	WB 1: 500-2000
Immunogen	Synthesized peptide derived from human CLLU1 AA range: 23-73
Specificity	This antibody detects endogenous levels of CLLU1 at Human
Formulation	Liquid in PBS containing 50% glycerol, 0.5% BSA and 0.02% sodium azide.
Storage	Store at -20°C. Avoid repeated freeze-thaw cycles.
Protein Name	CLLU1
Gene Name	CLLU1
Cellular localization	Cytoplasm . Detected in the cytoplasm of chronic lymphocytic leukemia (CLL) cells.
Purification	The antibody was affinity-purified from rabbit antiserum by affinity-chromatography using epitope-specific immunogen.
Clonality	Polyclonal
Concentration	1 mg/ml
Observed band	
Human Gene ID	574028
Human Swiss-Prot Number	Q5K131
Alternative Names	
Background	<p>The protein encoded by this gene is overexpressed in chronic lymphocytic leukemia (CLL) and serves as a good prognostic marker for the disease.</p> <p>Methylation of certain genes, including this one, have been associated with CLL. This gene is protein-coding in humans and non-protein coding in other primates. Three transcript variants, one protein-coding and the other two non-protein</p>

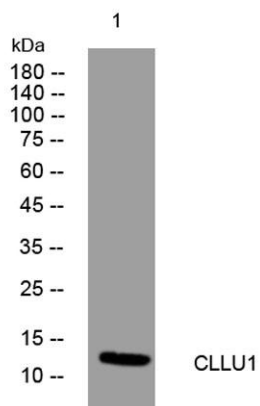




**ELK Biotechnology**

coding, have been found for this gene. [provided by RefSeq, Nov 2015],

Western blot analysis of lysates from 3T3 cells, primary antibody was diluted at 1:1000, 4° over night



+86-27-59760950

ELKbio@ELKbiotech.com

[www.elkbiotech.com](http://www.elkbiotech.com)

23-2, No.388 Gaoxin 2nd Road, Wuhan East Lake Hi-tech Development Zone, Hubei, P.R.C.