

CLPX rabbit pAb

Cat No.:ES17370

For research use only

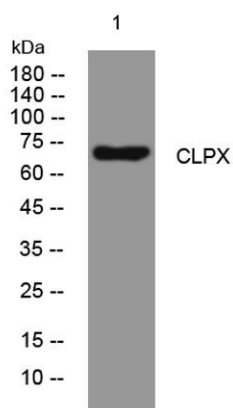
Overview

Product Name	CLPX rabbit pAb
Host species	Rabbit
Applications	WB
Species Cross-Reactivity	Human; Mouse;Rat
Recommended dilutions	WB 1: 500-2000
Immunogen	Synthesized peptide derived from human CLPX AA range: 328-378
Specificity	This antibody detects endogenous levels of CLPX at Human/Mouse/Rat
Formulation	Liquid in PBS containing 50% glycerol, 0.5% BSA and 0.02% sodium azide.
Storage	Store at -20°C. Avoid repeated freeze-thaw cycles.
Protein Name	CLPX
Gene Name	CLPX
Cellular localization	Mitochondrion. Mitochondrion matrix, mitochondrion nucleoid.
Purification	The antibody was affinity-purified from rabbit antiserum by affinity-chromatography using epitope-specific immunogen.
Clonality	Polyclonal
Concentration	1 mg/ml
Observed band	
Human Gene ID	10845
Human Swiss-Prot Number	O76031
Alternative Names	
Background	The protein encoded by this gene is part of a protease found in mitochondria. This protease is ATP-dependent and targets specific proteins for degradation. The protease consists of two heptameric rings of the CLPP catalytic subunit sandwiched between two hexameric rings of the chaperone subunit encoded by this gene. Targeted proteins are unwound by this protein and then





passed on to the CLPP subunit for degradation. Two transcript variants, one protein-coding and the other non-protein coding, have been found for this gene. [provided by RefSeq, Nov 2015],



Western blot analysis of lysates from HeLa cells, primary antibody was diluted at 1:1000, 4° over night

