



## CLVS2 rabbit pAb

Cat No.:ES17368

For research use only

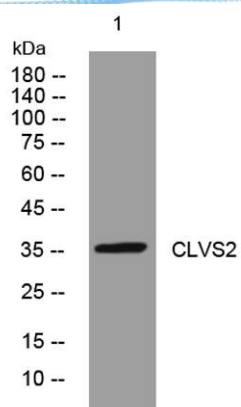
### Overview

|                          |                                                                                                                                                                                                                                            |
|--------------------------|--------------------------------------------------------------------------------------------------------------------------------------------------------------------------------------------------------------------------------------------|
| Product Name             | CLVS2 rabbit pAb                                                                                                                                                                                                                           |
| Host species             | Rabbit                                                                                                                                                                                                                                     |
| Applications             | WB                                                                                                                                                                                                                                         |
| Species Cross-Reactivity | Human; Mouse;Rat                                                                                                                                                                                                                           |
| Recommended dilutions    | WB 1: 500-2000                                                                                                                                                                                                                             |
| Immunogen                | Synthesized peptide derived from human CLVS2 AA range: 26-76                                                                                                                                                                               |
| Specificity              | This antibody detects endogenous levels of CLVS2 at Human/Mouse/Rat                                                                                                                                                                        |
| Formulation              | Liquid in PBS containing 50% glycerol, 0.5% BSA and 0.02% sodium azide.                                                                                                                                                                    |
| Storage                  | Store at -20°C. Avoid repeated freeze-thaw cycles.                                                                                                                                                                                         |
| Protein Name             | CLVS2                                                                                                                                                                                                                                      |
| Gene Name                | CLVS2 C6orf212 C6orf213 RLBP1L2                                                                                                                                                                                                            |
| Cellular localization    | Golgi apparatus, trans-Golgi network membrane ; Peripheral membrane protein . Cytoplasmic vesicle, clathrin-coated vesicle . Early endosome membrane ; Peripheral membrane protein .                                                       |
| Purification             | The antibody was affinity-purified from rabbit antiserum by affinity-chromatography using epitope-specific immunogen.                                                                                                                      |
| Clonality                | Polyclonal                                                                                                                                                                                                                                 |
| Concentration            | 1 mg/ml                                                                                                                                                                                                                                    |
| Observed band            |                                                                                                                                                                                                                                            |
| Human Gene ID            | 134829                                                                                                                                                                                                                                     |
| Human Swiss-Prot Number  | Q5SYC1                                                                                                                                                                                                                                     |
| Alternative Names        |                                                                                                                                                                                                                                            |
| Background               | This gene encodes a protein that belongs to the SEC14/CRAL-TRIO family of proteins. A similar protein in rat is thought to function in the endosomal pathway between early endosomes and mature lysosomes. [provided by RefSeq, Aug 2013], |





**ELK Biotechnology**



Western blot analysis of lysates from AD293 cells, primary antibody was diluted at 1:1000, 4° over night



+86-27-59760950

ELKbio@ELKbiotech.com

[www.elkbiotech.com](http://www.elkbiotech.com)

23-2, No.388 Gaoxin 2nd Road, Wuhan East Lake Hi-tech Development Zone, Hubei, P.R.C.