

CMBL rabbit pAb

Cat No.:ES17367

For research use only

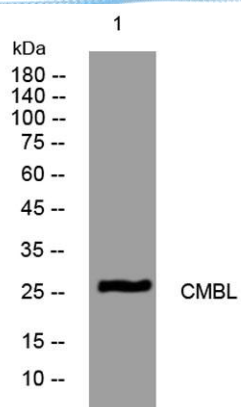
Overview

Product Name	CMBL rabbit pAb
Host species	Rabbit
Applications	WB
Species Cross-Reactivity	Human; Mouse;Rat
Recommended dilutions	WB 1: 500-2000
Immunogen	Synthesized peptide derived from human CMBL AA range: 136-186
Specificity	This antibody detects endogenous levels of CMBL at Human/Mouse/Rat
Formulation	Liquid in PBS containing 50% glycerol, 0.5% BSA and 0.02% sodium azide.
Storage	Store at -20°C. Avoid repeated freeze-thaw cycles.
Protein Name	CMBL
Gene Name	CMBL
Cellular localization	Cytoplasm, cytosol .
Purification	The antibody was affinity-purified from rabbit antiserum by affinity-chromatography using epitope-specific immunogen.
Clonality	Polyclonal
Concentration	1 mg/ml
Observed band	
Human Gene ID	134147
Human Swiss-Prot Number	Q96DG6
Alternative Names	
Background	CMBL (EC 3.1.1.45) is a cysteine hydrolase of the diene lactone hydrolase family that is highly expressed in liver cytosol. CMBL preferentially cleaves cyclic esters, and it activates medoxomil-ester prodrugs in which the medoxomil moiety is linked to an oxygen atom (Ishizuka et al., 2010 [PubMed 20177059]).[supplied by OMIM, Apr 2010],





ELK Biotechnology



Western blot analysis of lysates from U2OS cells, primary antibody was diluted at 1:1000, 4° over night



+86-27-59760950

ELKbio@ELKbiotech.com

www.elkbiotech.com

23-2, No.388 Gaoxin 2nd Road, Wuhan East Lake Hi-tech Development Zone, Hubei, P.R.C.