

COLGALT1 rabbit pAb

Cat No.:ES17334

For research use only

Overview

| | |
|--------------------------|---|
| Product Name | COLGALT1 rabbit pAb |
| Host species | Rabbit |
| Applications | WB |
| Species Cross-Reactivity | Human; Mouse |
| Recommended dilutions | WB 1:500-2000 |
| Immunogen | Synthesized peptide derived from human COLGALT1 AA range: 194-244 |
| Specificity | This antibody detects endogenous levels of COLGALT1 at Human/Mouse |
| Formulation | Liquid in PBS containing 50% glycerol, 0.5% BSA and 0.02% sodium azide. |
| Storage | Store at -20°C. Avoid repeated freeze-thaw cycles. |
| Protein Name | COLGALT1 |
| Gene Name | GLT25D1 PSEC0241 |
| Cellular localization | Endoplasmic reticulum lumen . Colocalized with PLOD3 and mannose binding lectin/MBL2. . |
| Purification | The antibody was affinity-purified from rabbit antiserum by affinity-chromatography using epitope-specific immunogen. |
| Clonality | Polyclonal |
| Concentration | 1 mg/ml |
| Observed band | 75kD |
| Human Gene ID | 79709 |
| Human Swiss-Prot Number | Q8NBJ5 |
| Alternative Names | Procollagen galactosyltransferase 1 (EC 2.4.1.50) (Glycosyltransferase 25 family member 1) (Hydroxylysine galactosyltransferase 1) |
| Background | The protein encoded by this gene is one of two enzymes that transfers galactose moieties to hydroxylysine residues of collagen and mannose binding lectin. This gene is constitutively expressed and encodes a soluble protein that localizes to the endoplasmic reticulum. [provided by RefSeq, Dec |

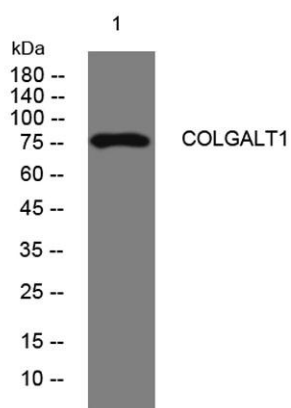




ELK Biotechnology

2015],

Western blot analysis of lysates from PC-12 cells, primary antibody was diluted at 1:1000, 4° over night



+86-27-59760950

ELKbio@ELKbiotech.com

www.elkbiotech.com

23-2, No.388 Gaoxin 2nd Road, Wuhan East Lake Hi-tech Development Zone, Hubei, P.R.C.