

COPB2 rabbit pAb

Cat No.:ES17301

For research use only

Overview

Product Name	COPB2 rabbit pAb
Host species	Rabbit
Applications	WB
Species Cross-Reactivity	Human; Mouse;Rat
Recommended dilutions	WB 1: 500-2000
Immunogen	Synthesized peptide derived from human COPB2 AA range: 662-712
Specificity	This antibody detects endogenous levels of COPB2 at Human/Mouse/Rat
Formulation	Liquid in PBS containing 50% glycerol, 0.5% BSA and 0.02% sodium azide.
Storage	Store at -20°C. Avoid repeated freeze-thaw cycles.
Protein Name	COPB2
Gene Name	COPB2
Cellular localization	Cytoplasm, cytosol . Golgi apparatus membrane ; Peripheral membrane protein ; Cytoplasmic side . Cytoplasmic vesicle, COPI-coated vesicle membrane ; Peripheral membrane protein ; Cytoplasmic side . The coatomer is cytoplasmic or polymerized on the cytopla
Purification	The antibody was affinity-purified from rabbit antiserum by affinity-chromatography using epitope-specific immunogen.
Clonality	Polyclonal
Concentration	1 mg/ml
Observed band	
Human Gene ID	9276
Human Swiss-Prot Number	P35606
Alternative Names	
Background	The Golgi coatomer complex (see MIM 601924) constitutes the coat of nonclathrin-coated vesicles and is essential for Golgi budding and vesicular trafficking. It consists of 7 protein subunits,

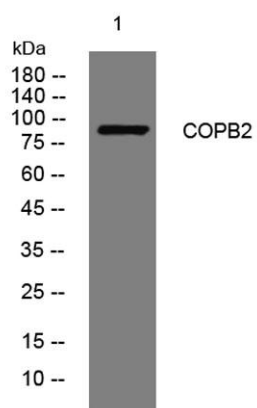




ELK Biotechnology

including COPB2.[supplied by OMIM, Jul 2002],

Western blot analysis of lysates from MCF-7 cells, primary antibody was diluted at 1:1000, 4° over night



+86-27-59760950

ELKbio@ELKbiotech.com

www.elkbiotech.com

23-2, No.388 Gaoxin 2nd Road,Wuhan East Lake Hi-tech Development Zone, Hubei , P.R.C