

COX6B2 Polyclona Antibody

Cat No.:ES17273

For research use only

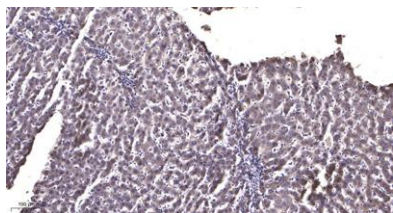
Overview

Product Name	COX6B2 Polyclona Antibody
Host species	Rabbit
Applications	IHC; ELISA
Species Cross-Reactivity	Human;Rat;Mouse;
Recommended dilutions	IHC-p 1:50-200, ELISA(peptide)1:5000-20000
Immunogen	Synthesized peptide derived from human COX6B2 AA range: 40-120
Specificity	This antibody detects endogenous levels of human COX6B2
Formulation	Liquid in PBS containing 50% glycerol, 0.5% BSA and 0.02% sodium azide.
Storage	Store at -20°C. Avoid repeated freeze-thaw cycles.
Protein Name	COX6B2
Gene Name	COX6B2
Cellular localization	Mitochondrion inner membrane ; Peripheral membrane protein ; Intermembrane side .
Purification	The antibody was affinity-purified from rabbit antiserum by affinity-chromatography using epitope-specific immunogen.
Clonality	Polyclonal
Concentration	1 mg/ml
Observed band	
Human Gene ID	125965
Human Swiss-Prot Number	Q6YFQ2
Alternative Names	Cytochrome c oxidase subunit 6B2 (Cancer/testis antigen 59;CT59;Cytochrome c oxidase subunit VIb isoform 2;COX VIb-2;Cytochrome c oxidase subunit VIb, testis-specific isoform)
Background	function:Connects the two COX monomers into the physiological dimeric form.,similarity:Belongs to the cytochrome c oxidase subunit 6B family.,tissue specificity:Testis specific. Weak expression in thymus and heart. Expressed in cancer cell lines.,





ELK Biotechnology



Immunohistochemical analysis of paraffin-embedded human liver cancer. 1, Antibody was diluted at 1:200(4° overnight). 2, Tris-EDTA,pH9.0 was used for antigen retrieval. 3,Secondary antibody was diluted at 1:200(room temperature, 45min).



+86-27-59760950

ELKbio@ELKbiotech.com

www.elkbiotech.com

23-2, No.388 Gaoxin 2nd Road,Wuhan East Lake Hi-tech Development Zone, Hubei , P.R.C