



CP062 rabbit pAb

Cat No.:ES17266

For research use only

Overview

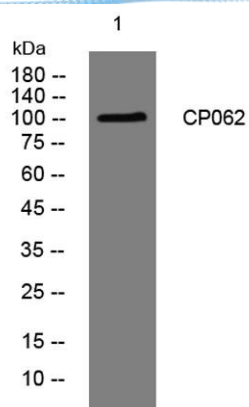
Product Name	CP062 rabbit pAb
Host species	Rabbit
Applications	WB
Species Cross-Reactivity	Human; Mouse;Rat
Recommended dilutions	WB 1:500-2000
Immunogen	Synthesized peptide derived from human CP062 AA range: 304-354
Specificity	This antibody detects endogenous levels of CP062 at Human/Mouse/Rat
Formulation	Liquid in PBS containing 50% glycerol, 0.5% BSA and 0.02% sodium azide.
Storage	Store at -20°C. Avoid repeated freeze-thaw cycles.
Protein Name	CP062
Gene Name	C16orf62 101F10.2
Cellular localization	Membrane ; Single-pass membrane protein . Endosome . Endosome location is dependent of the association with the CCC and WASH complexes. .
Purification	The antibody was affinity-purified from rabbit antiserum by affinity-chromatography using epitope-specific immunogen.
Clonality	Polyclonal
Concentration	1 mg/ml
Observed band	105kD
Human Gene ID	57020
Human Swiss-Prot Number	Q7Z3J2
Alternative Names	UPF0505 protein C16orf62 (Esophageal cancer-associated protein)

Background





ELK Biotechnology



Western blot analysis of lysates from HpeG2 cells, primary antibody was diluted at 1:1000, 4° over night



+86-27-59760950

ELKbio@ELKbiotech.com

www.elkbiotech.com

23-2, No.388 Gaoxin 2nd Road, Wuhan East Lake Hi-tech Development Zone, Hubei, P.R.C.