

DSE rabbit pAb

Cat No.:ES16888

For research use only

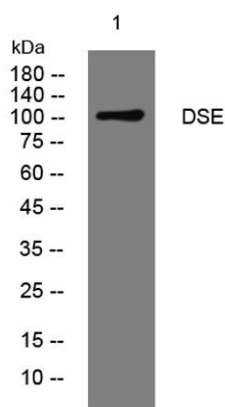
Overview

Product Name	DSE rabbit pAb
Host species	Rabbit
Applications	WB
Species Cross-Reactivity	Human; Mouse
Recommended dilutions	WB 1:500-2000
Immunogen	Synthesized peptide derived from human DSE AA range: 164-214
Specificity	This antibody detects endogenous levels of DSE at Human/Mouse
Formulation	Liquid in PBS containing 50% glycerol, 0.5% BSA and 0.02% sodium azide.
Storage	Store at -20°C. Avoid repeated freeze-thaw cycles.
Protein Name	DSE
Gene Name	DSE SART2
Cellular localization	Endoplasmic reticulum membrane ; Multi-pass membrane protein . Golgi apparatus membrane ; Multi-pass membrane protein . Cytoplasmic vesicle membrane ; Multi-pass membrane protein . Microsome membrane ; Multi-pass membrane protein .
Purification	The antibody was affinity-purified from rabbit antiserum by affinity-chromatography using epitope-specific immunogen.
Clonality	Polyclonal
Concentration	1 mg/ml
Observed band	105kD
Human Gene ID	29940
Human Swiss-Prot Number	Q9UL01
Alternative Names	Dermatan-sulfate epimerase (DS epimerase) (EC 5.1.3.19) (Chondroitin-glucuronate 5-epimerase) (Squamous cell carcinoma antigen recognized by T-cells 2) (SART-2)
Background	The protein encoded by this gene is a





tumor-rejection antigen. It is localized to the endoplasmic reticulum and functions to convert D-glucuronic acid to L-iduronic acid during the biosynthesis of dermatan sulfate. This antigen possesses tumor epitopes capable of inducing HLA-A24-restricted and tumor-specific cytotoxic T lymphocytes in cancer patients and may be useful for specific immunotherapy. Mutations in this gene cause inmusculocontractural Ehlers-Danlos syndrome. Alternative splicing results in multiple transcript variants. A related pseudogene has been identified on chromosome 9, and a paralogous gene exists on chromosome 18. [provided by RefSeq, Apr 2016],



Western blot analysis of lysates from 293T cells, primary antibody was diluted at 1:1000, 4° over night

