

ANT4 rabbit pAb

Cat No.:ES1661

For research use only

Overview

Product Name	ANT4 rabbit pAb
Host species	Rabbit
Applications	WB;IHC;IF;ELISA
Species Cross-Reactivity	Human;Mouse
Recommended dilutions	Western Blot: 1/500 - 1/2000. Immunohistochemistry: 1/100 - 1/300. Immunofluorescence: 1/200 - 1/1000. ELISA: 1/40000. Not yet tested in other applications.
Immunogen	The antiserum was produced against synthesized peptide derived from human SLC25A31. AA range:131-180
Specificity	ANT4 Polyclonal Antibody detects endogenous levels of ANT4 protein.
Formulation	Liquid in PBS containing 50% glycerol, 0.5% BSA and 0.02% sodium azide.
Storage	Store at -20°C. Avoid repeated freeze-thaw cycles.
Protein Name	ADP/ATP translocase 4
Gene Name	SLC25A31
Cellular localization	Mitochondrion inner membrane ; Multi-pass membrane protein . Membrane ; Multi-pass membrane protein . Cell projection, cilium, flagellum membrane ; Multi-pass membrane protein . In sperm flagellum this protein is located in the fibrous sheath, a non-mitochondrial region (PubMed:17137571). May localize to non-mitochondrial membranes (PubMed:27641616). .
Purification	The antibody was affinity-purified from rabbit antiserum by affinity-chromatography using epitope-specific immunogen.
Clonality	Polyclonal
Concentration	1 mg/ml
Observed band	35kD





Human Gene ID

83447

Human Swiss-Prot Number

Q9H0C2

Alternative Names

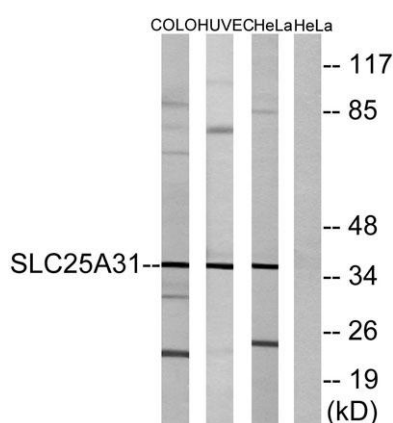
SLC25A31; AAC4; ANT4; SFEC; ADP/ATP translocase 4; ADP; ATP carrier protein 4; Adenine nucleotide translocator 4; ANT 4; Solute carrier family 25 member 31; Sperm flagellar energy carrier protein

Background

The protein encoded by this gene is a member of the ADP/ATP carrier family of proteins that exchange cytosolic ADP for matrix ATP in the mitochondria. Cells over-expressing this gene have been shown to display an anti-apoptotic phenotype. This protein is also thought to play a role in spermatogenesis, where it is believed to associate with a part of the flagellar cytoskeleton and with glycolytic enzymes. Male mice with mutations in the mouse ortholog of this gene are sterile and spermatocytes display an early meiotic arrest phenotype. Alternative splicing results in multiple transcript variants encoding different isoforms. [provided by RefSeq, Jan 2016],



Western Blot analysis of various cells using ANT4
Polyclonal Antibody diluted at 1:500

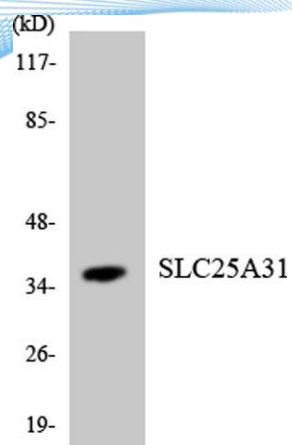


Western blot analysis of lysates from HeLa, HUVEC, and COLO cells, using SLC25A31 Antibody. The lane on the right is blocked with the synthesized peptide.

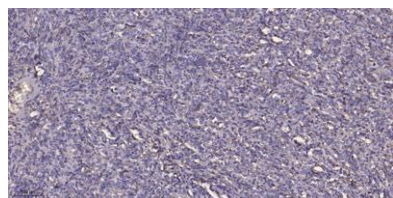




ELK Biotechnology



Western blot analysis of the lysates from K562 cells using SLC25A31 antibody.



Immunohistochemical analysis of paraffin-embedded human Colon cancer. 1, Antibody was diluted at 1:200(4° overnight). 2, Tris-EDTA,pH9.0 was used for antigen retrieval. 3,Secondary antibody was diluted at 1:200(room temperature, 45min).



+86-27-59760950

ELKbio@ELKbiotech.com

www.elkbiotech.com

23-2, No.388 Gaoxin 2nd Road,Wuhan East Lake Hi-tech Development Zone, Hubei , P.R.C