

GLSK rabbit pAb

Cat No.:ES16173

For research use only

Overview

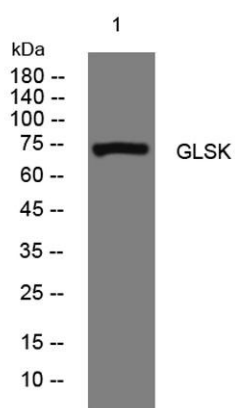
Product Name	GLSK rabbit pAb
Host species	Rabbit
Applications	WB
Species Cross-Reactivity	Human; Mouse;Rat
Recommended dilutions	WB 1: 500-2000
Immunogen	Synthesized peptide derived from human GLSK AA range: 162-212
Specificity	This antibody detects endogenous levels of GLSK at Human/Mouse/Rat
Formulation	Liquid in PBS containing 50% glycerol, 0.5% BSA and 0.02% sodium azide.
Storage	Store at -20°C. Avoid repeated freeze-thaw cycles.
Protein Name	GLSK
Gene Name	GLS GLS1 KIAA0838
Cellular localization	[Isoform 1]: Mitochondrion . Cytoplasm, cytosol . The 74-kDa cytosolic precursor is translocated into the mitochondria and processed via a 72-kDa intermediate to yield the mature 68- and 65-kDa subunits. .; [Isoform 3]: Mitochondrion .; [Glutaminase kidney
Purification	The antibody was affinity-purified from rabbit antiserum by affinity-chromatography using epitope-specific immunogen.
Clonality	Polyclonal
Concentration	1 mg/ml
Observed band	
Human Gene ID	2744
Human Swiss-Prot Number	O94925
Alternative Names	
Background	This gene encodes the K-type mitochondrial glutaminase. The encoded protein is an phosphate-activated amidohydrolase that catalyzes the hydrolysis of glutamine to glutamate and





ELK Biotechnology

ammonia. This protein is primarily expressed in the brain and kidney plays an essential role in generating energy for metabolism, synthesizing the brain neurotransmitter glutamate and maintaining acid-base balance in the kidney. Alternate splicing results in multiple transcript variants. [provided by RefSeq, Jan 2012],



Western blot analysis of lysates from K562 cells, primary antibody was diluted at 1:1000, 4°over night



+86-27-59760950

ELKbio@ELKbiotech.com

www.elkbiotech.com

23-2, No.388 Gaoxin 2nd Road,Wuhan East Lake Hi-tech Development Zone, Hubei , P.R.C