



GP-39 rabbit pAb

Cat No.:ES15931

For research use only

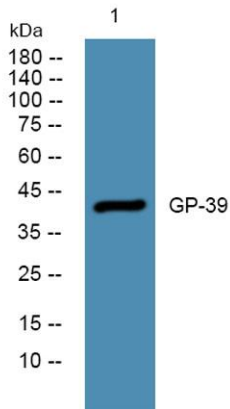
Overview

Product Name	GP-39 rabbit pAb
Host species	Rabbit
Applications	IHC;IF;WB
Species Cross-Reactivity	Human;Rat;Mouse;
Recommended dilutions	IHC-p 1:50-200, WB 1:500-2000
Immunogen	Synthesized peptide derived from human GP-39
Specificity	This antibody detects endogenous levels of human GP-39
Formulation	Liquid in PBS containing 50% glycerol, 0.5% BSA and 0.02% sodium azide.
Storage	Store at -20°C. Avoid repeated freeze-thaw cycles.
Protein Name	GP-39
Gene Name	CHI3L1
Cellular localization	Secreted, extracellular space . Cytoplasm . Cytoplasm, perinuclear region . Endoplasmic reticulum .
Purification	The antibody was affinity-purified from rabbit antiserum by affinity-chromatography using epitope-specific immunogen.
Clonality	Polyclonal
Concentration	1 mg/ml
Observed band	42kD
Human Gene ID	1116
Human Swiss-Prot Number	P36222
Alternative Names	Chitinase-3-like protein 1 (39 kDa synovial protein;Cartilage glycoprotein 39;CGP-39;GP-39;hCGP-39;YKL-40)
Background	Chitinases catalyze the hydrolysis of chitin, which is an abundant glycopolymer found in insect exoskeletons and fungal cell walls. The glycoside hydrolase 18 family of chitinases includes eight human family members. This gene encodes a glycoprotein member of the glycosyl hydrolase 18





family. The protein lacks chitinase activity and is secreted by activated macrophages, chondrocytes, neutrophils and synovial cells. The protein is thought to play a role in the process of inflammation and tissue remodeling. [provided by RefSeq, Sep 2009],



Western blot analysis of lysates from Jarkat cells, primary antibody was diluted at 1:1000, 4° over night

Immunohistochemical analysis of paraffin-embedded human tonsil. 1, Antibody was diluted at 1:200(4° overnight). 2, Tris-EDTA,pH9.0 was used for antigen retrieval. 3,Secondary antibody was diluted at 1:200(room temperature, 30min).

