

MLXPL rabbit pAb

Cat No.:ES14932

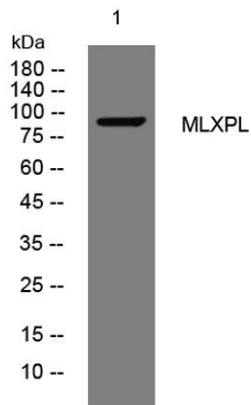
For research use only

Overview

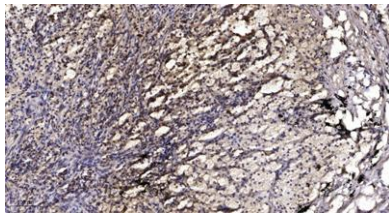
Product Name	MLXPL rabbit pAb
Host species	Rabbit
Applications	WB; ELISA;IHC
Species Cross-Reactivity	Human; Mouse;Rat
Recommended dilutions	WB 1:500-2000;IHC-p 1:50-300; ELISA 2000-20000
Immunogen	Synthesized peptide derived from human MLXPL AA range: 303-353
Specificity	This antibody detects endogenous levels of MLXPL at Human/Mouse/Rat
Formulation	Liquid in PBS containing 50% glycerol, 0.5% BSA and 0.02% sodium azide.
Storage	Store at -20°C. Avoid repeated freeze-thaw cycles.
Protein Name	MLXPL
Gene Name	MLXIPL BHLHD14 MIO WBSCR14
Cellular localization	Nucleus.
Purification	The antibody was affinity-purified from rabbit antiserum by affinity-chromatography using epitope-specific immunogen.
Clonality	Polyclonal
Concentration	1 mg/ml
Observed band	
Human Gene ID	51085
Human Swiss-Prot Number	Q9NP71
Alternative Names	
Background	This gene encodes a basic helix-loop-helix leucine zipper transcription factor of the Myc/Max/Mad superfamily. This protein forms a heterodimeric complex and binds and activates, in a glucose-dependent manner, carbohydrate response element (ChoRE) motifs in the promoters of triglyceride synthesis genes. The gene is deleted in Williams-Beuren syndrome, a multisystem developmental disorder caused by the deletion of



contiguous genes at chromosome 7q11.23.
Alternative splicing results in multiple transcript variants. [provided by RefSeq, Dec 2015],



Western blot analysis of lysates from HeLa cells, primary antibody was diluted at 1:1000, 4° over night



Immunohistochemical analysis of paraffin-embedded human Squamous cell carcinoma of lung. 1, Antibody was diluted at 1:200(4° overnight). 2, Tris-EDTA, pH9.0 was used for antigen retrieval. 3, Secondary antibody was diluted at 1:200(room temperature, 45min).

