

# NUDT6 rabbit pAb

Cat No.:ES14431

For research use only

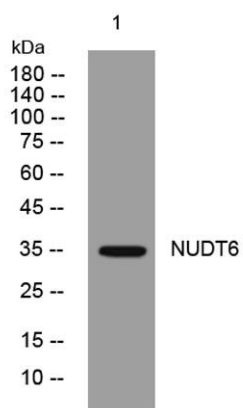
## Overview

Product Name	NUDT6 rabbit pAb
Host species	Rabbit
Applications	WB
Species Cross-Reactivity	Human; Mouse;Rat
Recommended dilutions	WB 1: 500-2000
Immunogen	Synthesized peptide derived from human NUDT6 AA range: 225-275
Specificity	This antibody detects endogenous levels of NUDT6 at Human/Mouse/Rat
Formulation	Liquid in PBS containing 50% glycerol, 0.5% BSA and 0.02% sodium azide.
Storage	Store at -20°C. Avoid repeated freeze-thaw cycles.
Protein Name	NUDT6
Gene Name	NUDT6 FGF2AS
Cellular localization	Cytoplasm. Nucleus. Mitochondrion. Subcellular location may vary between isoforms.
Purification	The antibody was affinity-purified from rabbit antiserum by affinity-chromatography using epitope-specific immunogen.
Clonality	Polyclonal
Concentration	1 mg/ml
Observed band	
Human Gene ID	11162
Human Swiss-Prot Number	P53370
Alternative Names	
Background	This gene overlaps and lies on the opposite strand from FGF2 gene, and is thought to be the FGF2 antisense gene. The two genes are independently transcribed, and their expression shows an inverse relationship, suggesting that this antisense transcript may regulate FGF2 expression. This gene has also been shown to have hormone-regulatory and antiproliferative actions in the pituitary that are





independent of FGF2 expression. Alternatively spliced transcript variants encoding different isoforms have been found for this gene. [provided by RefSeq, Oct 2011],



Western blot analysis of lysates from KB cells, primary antibody was diluted at 1:1000, 4° over night

