



PI51A rabbit pAb

Cat No.:ES14115

For research use only

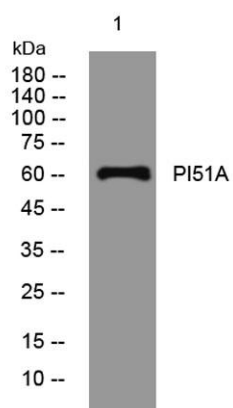
Overview

Product Name	PI51A rabbit pAb
Host species	Rabbit
Applications	WB
Species Cross-Reactivity	Human; Mouse
Recommended dilutions	WB 1:500-2000
Immunogen	Synthesized peptide derived from human PI51A AA range: 270-320
Specificity	This antibody detects endogenous levels of PI51A at Human/Mouse
Formulation	Liquid in PBS containing 50% glycerol, 0.5% BSA and 0.02% sodium azide.
Storage	Store at -20°C. Avoid repeated freeze-thaw cycles.
Protein Name	PI51A
Gene Name	PIP5K1A
Cellular localization	Cell membrane . Cytoplasm . Nucleus . Nucleus speckle . Cell projection, ruffle . Cell projection, lamellipodium . Colocalizes with RAC1 at actin-rich membrane ruffles (PubMed:20660631). Localizes to nuclear speckles and associates with TUT1 to regulate p
Purification	The antibody was affinity-purified from rabbit antiserum by affinity-chromatography using epitope-specific immunogen.
Clonality	Polyclonal
Concentration	1 mg/ml
Observed band	60kD
Human Gene ID	8394
Human Swiss-Prot Number	Q99755
Alternative Names	Phosphatidylinositol 4-phosphate 5-kinase type-1 alpha (PIP5K1-alpha) (PtdIns(4)P-5-kinase 1 alpha) (EC 2.7.1.68) (68 kDa type I phosphatidylinositol 4-phosphate 5-kinase alpha) (Phosphatidylinositol 4-phosphate 5-kinase type I alpha) (PIP5KIalpha)





Background



Western blot analysis of lysates from AD293 cells, primary antibody was diluted at 1:1000, 4° over night

