

# PIGZ rabbit pAb

Cat No.:ES14109

For research use only

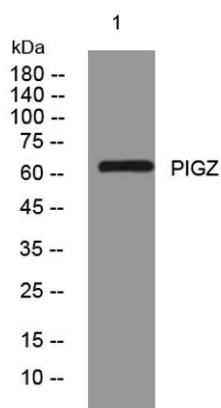
## Overview

Product Name	PIGZ rabbit pAb
Host species	Rabbit
Applications	WB;ELISA;IHC
Species Cross-Reactivity	Human; Mouse
Recommended dilutions	WB 1:500-2000;IHC-p 1:50-300; ELISA 2000-20000
Immunogen	Synthesized peptide derived from human PIGZ AA range: 251-301
Specificity	This antibody detects endogenous levels of PIGZ at Human/Mouse
Formulation	Liquid in PBS containing 50% glycerol, 0.5% BSA and 0.02% sodium azide.
Storage	Store at -20°C. Avoid repeated freeze-thaw cycles.
Protein Name	PIGZ
Gene Name	PIGZ SMP3
Cellular localization	Endoplasmic reticulum membrane ; Multi-pass membrane protein .
Purification	The antibody was affinity-purified from rabbit antiserum by affinity-chromatography using epitope-specific immunogen.
Clonality	Polyclonal
Concentration	1 mg/ml
Observed band	
Human Gene ID	80235
Human Swiss-Prot Number	Q86VD9
Alternative Names	
Background	The glycosylphosphatidylinositol (GPI) anchor is a glycolipid found on many blood cells that serves to anchor proteins to the cell surface. This gene encodes a protein that is localized to the endoplasmic reticulum, and is involved in GPI anchor biosynthesis. As shown for the yeast homolog, which is a member of a family of dolichol-phosphate-mannose

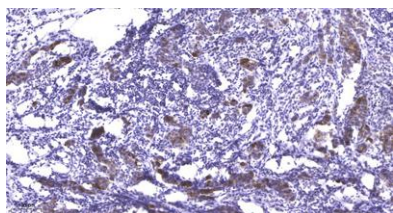




(Dol-P-Man)-dependent mannosyltransferases, this protein can also add a side-branching fourth mannose to GPI precursors during the assembly of GPI anchors. [provided by RefSeq, Jul 2008],



Western blot analysis of lysates from THP-1 cells, primary antibody was diluted at 1:1000, 4° over night



Immunohistochemical analysis of paraffin-embedded human Breast cancer. 1, Antibody was diluted at 1:200(4° overnight). 2, Tris-EDTA, pH9.0 was used for antigen retrieval. 3, Secondary antibody was diluted at 1:200(room temperature, 45min).

