

# PKC $\alpha$ / $\beta$ II (phospho-Thr638/641) rabbit pAb

Cat No.:ES14096

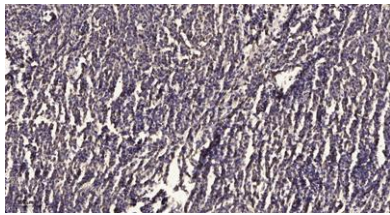
For research use only

## Overview

Product Name	PKC $\alpha$ / $\beta$ II (phospho-Thr638/641) rabbit pAb
Host species	Rabbit
Applications	WB;IHC
Species Cross-Reactivity	Human;Mouse
Recommended dilutions	WB 1:500-2000;IHC-p 1:50-300
Immunogen	Synthesized phospho peptide around human PKC $\alpha$ (Thr638 and 641)
Specificity	This antibody detects endogenous levels of Human Mouse PKC $\alpha$ / $\beta$ II (phospho-Thr638 or 641)
Formulation	Liquid in PBS containing 50% glycerol, 0.5% BSA and 0.02% sodium azide.
Storage	Store at -20°C. Avoid repeated freeze-thaw cycles.
Protein Name	PKC $\alpha$ / $\beta$ II (Thr638/641)
Gene Name	
Cellular localization	Cytoplasm . Cell membrane ; Peripheral membrane protein . Mitochondrion membrane ; Peripheral membrane protein . Nucleus .
Purification	The antibody was affinity-purified from rabbit antiserum by affinity-chromatography using epitope-specific immunogen.
Clonality	Polyclonal
Concentration	1 mg/ml
Observed band	76kD
Human Gene ID	5578
Human Swiss-Prot Number	P17252
Alternative Names	Protein kinase C alpha type (PKC-A) (PKC-alpha) (EC 2.7.11.13)
Background	Protein kinase C (PKC) is a family of serine- and threonine-specific protein kinases that can be activated by calcium and the second messenger diacylglycerol. PKC family members phosphorylate a wide variety of protein targets and are known to be involved in diverse cellular signaling pathways. PKC



family members also serve as major receptors for phorbol esters, a class of tumor promoters. Each member of the PKC family has a specific expression profile and is believed to play a distinct role in cells. The protein encoded by this gene is one of the PKC family members. This kinase has been reported to play roles in many different cellular processes, such as cell adhesion, cell transformation, cell cycle checkpoint, and cell volume control. Knockout studies in mice suggest that this kinase may be a fundamental regulator of cardiac contractility and  $\text{Ca}^{2+}$  handling in myocytes. [provided by RefSeq, Jul 2]



Immunohistochemical analysis of paraffin-embedded human meningioma. 1, Antibody was diluted at 1:200(4° overnight). 2, Tris-EDTA,pH9.0 was used for antigen retrieval. 3,Secondary antibody was diluted at 1:200(room temperature, 45min).

