

PKHA3 rabbit pAb

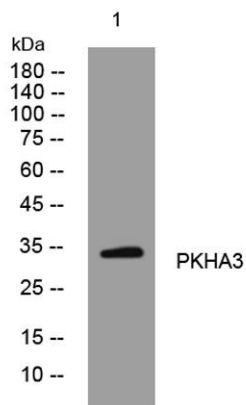
Cat No.:ES14093

For research use only

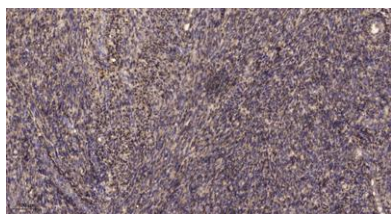
Overview

Product Name	PKHA3 rabbit pAb
Host species	Rabbit
Applications	WB;IHC
Species Cross-Reactivity	Human; Mouse
Recommended dilutions	WB 1:500-2000;IHC-p 1:50-300
Immunogen	Synthesized peptide derived from human PKHA3 AA range: 189-239
Specificity	This antibody detects endogenous levels of PKHA3 at Human/Mouse
Formulation	Liquid in PBS containing 50% glycerol, 0.5% BSA and 0.02% sodium azide.
Storage	Store at -20°C. Avoid repeated freeze-thaw cycles.
Protein Name	PKHA3
Gene Name	PLEKHA3 FAPP1
Cellular localization	Golgi apparatus, trans-Golgi network membrane ; Peripheral membrane protein . Localizes to ER-trans Golgi network (TGN) contacts sites. .
Purification	The antibody was affinity-purified from rabbit antiserum by affinity-chromatography using epitope-specific immunogen.
Clonality	Polyclonal
Concentration	1 mg/ml
Observed band	
Human Gene ID	65977
Human Swiss-Prot Number	Q9HB20
Alternative Names	
Background	





Western blot analysis of lysates from U2OS cells, primary antibody was diluted at 1:1000, 4° over night



Immunohistochemical analysis of paraffin-embedded human uterus. 1, Antibody was diluted at 1:200(4° overnight). 2, Tris-EDTA, pH9.0 was used for antigen retrieval. 3, Secondary antibody was diluted at 1:200(room temperature, 45min).

