

# PKHA7 rabbit pAb

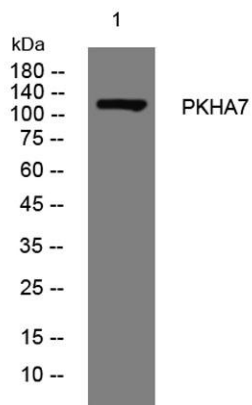
Cat No.:ES14092

For research use only

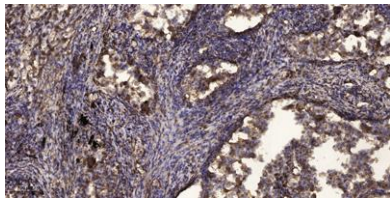
## Overview

|                          |  |
|--------------------------|--|
| Product Name             | PKHA7 rabbit pAb   |
| Host species             | Rabbit   |
| Applications             | WB;ELISA;IHC   |
| Species Cross-Reactivity | Human; Mouse   |
| Recommended dilutions    | WB 1:500-2000;IHC-p 1:50-300; ELISA 2000-20000   |
| Immunogen                | Synthesized peptide derived from human PKHA7 AA range: 96-146  |
| Specificity              | This antibody detects endogenous levels of PKHA7 at Human/Mouse  |
| Formulation              | Liquid in PBS containing 50% glycerol, 0.5% BSA and 0.02% sodium azide.  |
| Storage                  | Store at -20°C. Avoid repeated freeze-thaw cycles.   |
| Protein Name             | PKHA7  |
| Gene Name                | PLEKHA7  |
| Cellular localization    | Cell junction, adherens junction . Cytoplasm . Cytoplasm, cytoskeleton, microtubule organizing center, centrosome . Localizes to zonula adherens, recruited via its interaction with CTNND1. . |
| Purification             | The antibody was affinity-purified from rabbit antiserum by affinity-chromatography using epitope-specific immunogen.  |
| Clonality                | Polyclonal   |
| Concentration            | 1 mg/ml  |
| Observed band            |  |
| Human Gene ID            | 144100   |
| Human Swiss-Prot Number  | Q6IQ23   |
| Alternative Names        |  |
| Background               |  |





Western blot analysis of lysates from PC-12 cells, primary antibody was diluted at 1:1000, 4° over night



Immunohistochemical analysis of paraffin-embedded human Squamous cell carcinoma of lung. 1, Antibody was diluted at 1:200(4° overnight). 2, Tris-EDTA, pH9.0 was used for antigen retrieval. 3, Secondary antibody was diluted at 1:200(room temperature, 45min).

