

# PLCy1 (phospho-Ser1248) rabbit pAb

Cat No.:ES14069

For research use only

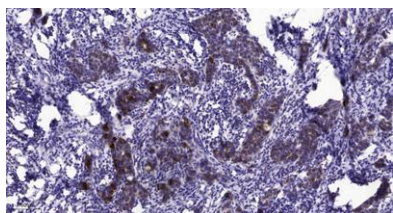
## Overview

Product Name	PLCy1 (phospho-Ser1248) rabbit pAb
Host species	Rabbit
Applications	WB;IHC
Species Cross-Reactivity	Human;Mouse
Recommended dilutions	WB 1:500-2000;IHC-p 1:50-300
Immunogen	Synthesized phospho peptide around human PLCy1 (Ser1248)
Specificity	This antibody detects endogenous levels of Human Mouse PLCy1 (phospho-Ser1248)
Formulation	Liquid in PBS containing 50% glycerol, 0.5% BSA and 0.02% sodium azide.
Storage	Store at -20°C. Avoid repeated freeze-thaw cycles.
Protein Name	PLCy1 (Ser1248)
Gene Name	PLCG1 PLC1
Cellular localization	Cell projection, lamellipodium . Cell projection, ruffle . Rapidly redistributed to ruffles and lamellipodia structures in response to epidermal growth factor (EGF) treatment. .
Purification	The antibody was affinity-purified from rabbit antiserum by affinity-chromatography using epitope-specific immunogen.
Clonality	Polyclonal
Concentration	1 mg/ml
Observed band	150kD
Human Gene ID	5335
Human Swiss-Prot Number	P19174
Alternative Names	1-phosphatidylinositol 4,5-bisphosphate phosphodiesterase gamma-1 (EC 3.1.4.11) (PLC-148) (Phosphoinositide phospholipase C-gamma-1) (Phospholipase C-II) (PLC-II) (Phospholipase C-gamma-1) (PLC-gamma-1)
Background	The protein encoded by this gene catalyzes the formation of inositol 1,4,5-trisphosphate and





diacylglycerol from phosphatidylinositol 4,5-bisphosphate. This reaction uses calcium as a cofactor and plays an important role in the intracellular transduction of receptor-mediated tyrosine kinase activators. For example, when activated by SRC, the encoded protein causes the Ras guanine nucleotide exchange factor RasGRP1 to translocate to the Golgi, where it activates Ras. Also, this protein has been shown to be a major substrate for heparin-binding growth factor 1 (acidic fibroblast growth factor)-activated tyrosine kinase. Two transcript variants encoding different isoforms have been found for this gene. [provided by RefSeq, Jul 2008],



Immunohistochemical analysis of paraffin-embedded human Breast cancer. 1, Antibody was diluted at 1:200(4° overnight). 2, Tris-EDTA,pH9.0 was used for antigen retrieval. 3,Secondary antibody was diluted at 1:200(room temperature, 45min).

