

# PLEK2 rabbit pAb

Cat No.:ES14065

For research use only

## Overview

Product Name	PLEK2 rabbit pAb
Host species	Rabbit
Applications	WB
Species Cross-Reactivity	Human; Mouse
Recommended dilutions	WB 1:500-2000
Immunogen	Synthesized peptide derived from human PLEK2 AA range: 5-55
Specificity	This antibody detects endogenous levels of PLEK2 at Human/Mouse
Formulation	Liquid in PBS containing 50% glycerol, 0.5% BSA and 0.02% sodium azide.
Storage	Store at -20°C. Avoid repeated freeze-thaw cycles.
Protein Name	PLEK2
Gene Name	PLEK2
Cellular localization	Cell projection, lamellipodium membrane; Peripheral membrane protein. Cytoplasm, cytoskeleton.
Purification	The antibody was affinity-purified from rabbit antiserum by affinity-chromatography using epitope-specific immunogen.
Clonality	Polyclonal
Concentration	1 mg/ml
Observed band	38kD
Human Gene ID	26499
Human Swiss-Prot Number	Q9NYT0
Alternative Names	Pleckstrin-2
Background	The protein encoded by this gene associates with membrane-bound phosphatidylinositols generated by phosphatidylinositol 3-kinase. The encoded protein then interacts with the actin cytoskeleton to induce cell spreading. In conjunction with complement component 1, q subcomponent, B chain (C1QB), this gene shows an increase in

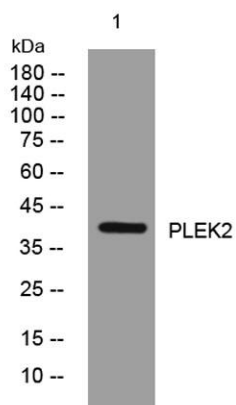




**ELK Biotechnology**

expression in melanoma cells and may serve as an accurate biomarker for the disease. [provided by RefSeq, Dec 2015],

Western blot analysis of lysates from MCF-7 cells, primary antibody was diluted at 1:1000, 4° over night



+86-27-59760950

ELKbio@ELKbiotech.com

[www.elkbiotech.com](http://www.elkbiotech.com)

23-2, No.388 Gaoxin 2nd Road, Wuhan East Lake Hi-tech Development Zone, Hubei, P.R.C.