



PLIN5 rabbit pAb

Cat No.:ES14064

For research use only

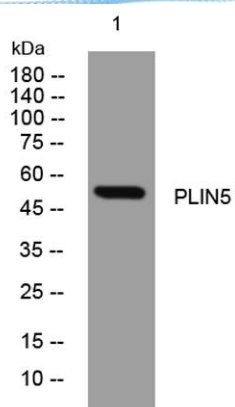
Overview

Product Name	PLIN5 rabbit pAb
Host species	Rabbit
Applications	WB
Species Cross-Reactivity	Human; Mouse
Recommended dilutions	WB 1: 500-2000
Immunogen	Synthesized peptide derived from human PLIN5 AA range: 80-130
Specificity	This antibody detects endogenous levels of PLIN5 at Human/Mouse
Formulation	Liquid in PBS containing 50% glycerol, 0.5% BSA and 0.02% sodium azide.
Storage	Store at -20°C. Avoid repeated freeze-thaw cycles.
Protein Name	PLIN5
Gene Name	PLIN5 LSDP5
Cellular localization	Lipid droplet . Cytoplasm . Mitochondrion . Lipid droplet surface-associated. Exchanges between lipid droplets and the cytoplasm. .
Purification	The antibody was affinity-purified from rabbit antiserum by affinity-chromatography using epitope-specific immunogen.
Clonality	Polyclonal
Concentration	1 mg/ml
Observed band	
Human Gene ID	440503
Human Swiss-Prot Number	Q00G26
Alternative Names	
Background	Members of the perilipin family, such as PLIN5, coat intracellular lipid storage droplets and protect them from lipolytic degradation (Dalen et al., 2007 [PubMed 17234449]).[supplied by OMIM, Feb 2010],





ELK Biotechnology



Western blot analysis of lysates from K562 cells, primary antibody was diluted at 1:1000, 4° over night



+86-27-59760950

ELKbio@ELKbiotech.com

www.elkbiotech.com

23-2, No.388 Gaoxin 2nd Road, Wuhan East Lake Hi-tech Development Zone, Hubei, P.R.C