

# POK20 rabbit pAb

Cat No.:ES14036

For research use only

## Overview

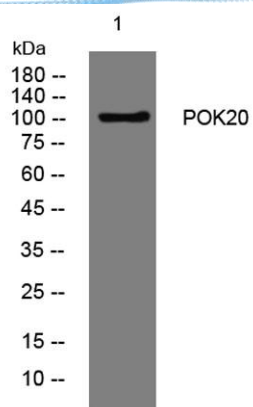
Product Name	POK20 rabbit pAb
Host species	Rabbit
Applications	WB
Species Cross-Reactivity	Human;Rat;Mouse;
Recommended dilutions	WB 1:500-2000
Immunogen	Synthesized peptide derived from human POK20 AA range: 129-179
Specificity	This antibody detects endogenous levels of POK20 at Human
Formulation	Liquid in PBS containing 50% glycerol, 0.5% BSA and 0.02% sodium azide.
Storage	Store at -20°C. Avoid repeated freeze-thaw cycles.
Protein Name	POK20
Gene Name	
Cellular localization	
Purification	The antibody was affinity-purified from rabbit antiserum by affinity-chromatography using epitope-specific immunogen.
Clonality	Polyclonal
Concentration	1 mg/ml
Observed band	105kD
Human Gene ID	
Human Swiss-Prot Number	Q9UQG0
Alternative Names	HERV-K_3q27.3 provirus ancestral Pol protein [Includes: Reverse transcriptase (RT) (EC 2.7.7.49); Ribonuclease H (RNase H) (EC 3.1.26.4); Integrase (IN)]

## Background





**ELK Biotechnology**



Western blot analysis of lysates from Jarkat cells, primary antibody was diluted at 1:1000, 4° over night



+86-27-59760950

ELKbio@ELKbiotech.com

[www.elkbiotech.com](http://www.elkbiotech.com)

23-2, No.388 Gaoxin 2nd Road, Wuhan East Lake Hi-tech Development Zone, Hubei, P.R.C.