



# POLK rabbit pAb

Cat No.:ES14031

For research use only

## Overview

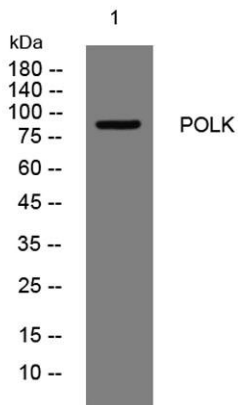
<b>Product Name</b>	POLK rabbit pAb
<b>Host species</b>	Rabbit
<b>Applications</b>	WB
<b>Species Cross-Reactivity</b>	Human; Mouse
<b>Recommended dilutions</b>	WB 1: 500-2000
<b>Immunogen</b>	Synthesized peptide derived from human POLK AA range: 272-322
<b>Specificity</b>	This antibody detects endogenous levels of POLK at Human/Mouse
<b>Formulation</b>	Liquid in PBS containing 50% glycerol, 0.5% BSA and 0.02% sodium azide.
<b>Storage</b>	Store at -20°C. Avoid repeated freeze-thaw cycles.
<b>Protein Name</b>	POLK
<b>Gene Name</b>	POLK DINB1
<b>Cellular localization</b>	Nucleus . Detected throughout the nucleus and at replication foci (PubMed:12414988). Recruited to DNA damage sites in response to ultraviolet irradiation: N6-methyladenosine (m6A)-containing mRNAs accumulate in the vicinity of DNA damage sites and their p
<b>Purification</b>	The antibody was affinity-purified from rabbit antiserum by affinity-chromatography using epitope-specific immunogen.
<b>Clonality</b>	Polyclonal
<b>Concentration</b>	1 mg/ml
<b>Observed band</b>	
<b>Human Gene ID</b>	51426
<b>Human Swiss-Prot Number</b>	Q9UBT6
<b>Alternative Names</b>	
<b>Background</b>	This gene encodes a member of the DNA polymerase type-Y family of proteins. The encoded protein is a specialized DNA polymerase that catalyzes translesion DNA synthesis, which allows





**ELK Biotechnology**

DNA replication in the presence of DNA lesions. Human cell lines lacking a functional copy of this gene exhibit impaired genome integrity and enhanced susceptibility to oxidative damage. Mutations in this gene that impair enzyme activity may be associated with prostate cancer in human patients. [provided by RefSeq, Sep 2016],



Western blot analysis of lysates from HeLa cells, primary antibody was diluted at 1:1000, 4° over night



+86-27-59760950

[ELKbio@ELKbiotech.com](mailto:ELKbio@ELKbiotech.com)

[www.elkbiotech.com](http://www.elkbiotech.com)

23-2, No.388 Gaoxin 2nd Road, Wuhan East Lake Hi-tech Development Zone, Hubei, P.R.C