

# PSD2 rabbit pAb

Cat No.:ES13886

For research use only

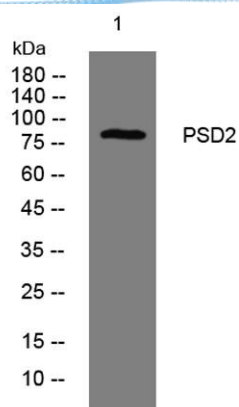
## Overview

Product Name	PSD2 rabbit pAb
Host species	Rabbit
Applications	WB
Species Cross-Reactivity	Human; Mouse
Recommended dilutions	WB 1:500-2000
Immunogen	Synthesized peptide derived from human PSD2 AA range: 57-107
Specificity	This antibody detects endogenous levels of PSD2 at Human/Mouse
Formulation	Liquid in PBS containing 50% glycerol, 0.5% BSA and 0.02% sodium azide.
Storage	Store at -20°C. Avoid repeated freeze-thaw cycles.
Protein Name	PSD2
Gene Name	PSD2
Cellular localization	Cell membrane ; Single-pass membrane protein . Cell projection, ruffle membrane . Cleavage furrow . In interphase associated with the plasma membrane, in particular with membrane ruffling regions. In cells undergoing cytokinesis, transiently found around
Purification	The antibody was affinity-purified from rabbit antiserum by affinity-chromatography using epitope-specific immunogen.
Clonality	Polyclonal
Concentration	1 mg/ml
Observed band	85kD
Human Gene ID	84249
Human Swiss-Prot Number	Q9BQI7
Alternative Names	PH and SEC7 domain-containing protein 2 (Pleckstrin homology and SEC7 domain-containing protein 2)
Background	





**ELK Biotechnology**



Western blot analysis of lysates from CACO2 cells, primary antibody was diluted at 1:1000, 4° over night



+86-27-59760950

ELKbio@ELKbiotech.com

[www.elkbiotech.com](http://www.elkbiotech.com)

23-2, No.388 Gaoxin 2nd Road, Wuhan East Lake Hi-tech Development Zone, Hubei, P.R.C.