

TRY6 rabbit pAb

Cat No.:ES12539

For research use only

Overview

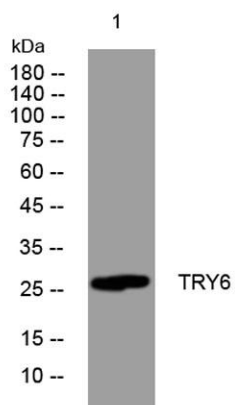
Product Name	TRY6 rabbit pAb
Host species	Rabbit
Applications	WB
Species Cross-Reactivity	Human;Rat;Mouse;
Recommended dilutions	WB 1: 500-2000
Immunogen	Synthesized peptide derived from human TRY6 AA range: 21-71
Specificity	This antibody detects endogenous levels of TRY6 at Human
Formulation	Liquid in PBS containing 50% glycerol, 0.5% BSA and 0.02% sodium azide.
Storage	Store at -20°C. Avoid repeated freeze-thaw cycles.
Protein Name	TRY6
Gene Name	TRY6 T6
Cellular localization	Secreted .
Purification	The antibody was affinity-purified from rabbit antiserum by affinity-chromatography using epitope-specific immunogen.
Clonality	Polyclonal
Concentration	1 mg/ml
Observed band	
Human Gene ID	
Human Swiss-Prot Number	Q8NHM4
Alternative Names	
Background	Although this locus appears to encode a protein similar to trypsinogen, the locus is thought to be a transcribed pseudogene. ESTs support its transcription, but expression of its predicted protein has not been observed. Its predicted protein sequence differs significantly from the known functional trypsinogens, including a different amino acid at the conserved residue 122 which is important for autolysis. This pseudogene and





ELK Biotechnology

several other trypsinogen genes are localized to the
T cell receptor beta locus on chromosome 7.
[provided by RefSeq, Jul 2008],



Western blot analysis of lysates from SW480 cells, primary
antibody was diluted at 1:1000, 4°over night



+86-27-59760950

ELKbio@ELKbiotech.com

www.elkbiotech.com

23-2, No.388 Gaoxin 2nd Road,Wuhan East Lake Hi-tech Development Zone, Hubei , P.R.C