

# VCX1 rabbit pAb

Cat No.:ES12382

For research use only

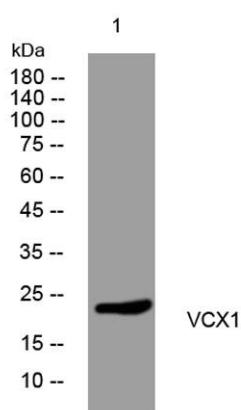
## Overview

Product Name	VCX1 rabbit pAb
Host species	Rabbit
Applications	WB
Species Cross-Reactivity	Human;Rat;Mouse;
Recommended dilutions	WB 1: 500-2000
Immunogen	Synthesized peptide derived from human VCX1 AA range: 95-145
Specificity	This antibody detects endogenous levels of VCX1 at Human
Formulation	Liquid in PBS containing 50% glycerol, 0.5% BSA and 0.02% sodium azide.
Storage	Store at -20°C. Avoid repeated freeze-thaw cycles.
Protein Name	VCX1
Gene Name	VCX VCX1 VCX10R VCXB1
Cellular localization	nucleus,nucleolus,
Purification	The antibody was affinity-purified from rabbit antiserum by affinity-chromatography using epitope-specific immunogen.
Clonality	Polyclonal
Concentration	1 mg/ml
Observed band	
Human Gene ID	26609
Human Swiss-Prot Number	Q9H320
Alternative Names	
Background	This gene belongs to the VCX/Y gene family, which has multiple members on both X and Y chromosomes, and all are expressed exclusively in male germ cells. The X-linked members are clustered on chromosome Xp22 and Y-linked members are two identical copies of the gene within a palindromic region on Yq11. The family members share a high degree of sequence identity, with the exception that a 30-bp unit is tandemly repeated in





X-linked members but occurs only once in Y-linked members. The VCX gene cluster is polymorphic in terms of copy number; different individuals may have a different number of VCX genes. VCX/Y genes encode small and highly charged proteins of unknown function. The presence of a putative bipartite nuclear localization signal suggests that VCX/Y members are nuclear proteins. This gene contains 10 repeats of the 30-bp unit. [provided by RefSeq, Jul 2008],



Western blot analysis of lysates from HuvEc cells, primary antibody was diluted at 1:1000, 4° over night

