

# WWC3 rabbit pAb

Cat No.:ES12284

For research use only

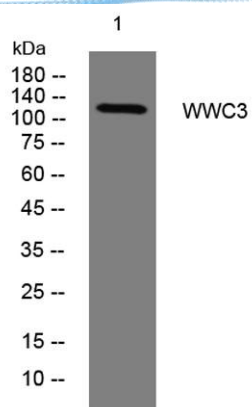
## Overview

Product Name	WWC3 rabbit pAb
Host species	Rabbit
Applications	WB
Species Cross-Reactivity	Human
Recommended dilutions	WB 1: 500-2000
Immunogen	Synthesized peptide derived from human WWC3 AA range: 363-413
Specificity	This antibody detects endogenous levels of WWC3 at Human
Formulation	Liquid in PBS containing 50% glycerol, 0.5% BSA and 0.02% sodium azide.
Storage	Store at -20°C. Avoid repeated freeze-thaw cycles.
Protein Name	WWC3
Gene Name	WWC3 KIAA1280
Cellular localization	cytosol,
Purification	The antibody was affinity-purified from rabbit antiserum by affinity-chromatography using epitope-specific immunogen.
Clonality	Polyclonal
Concentration	1 mg/ml
Observed band	
Human Gene ID	55841
Human Swiss-Prot Number	Q9ULE0
Alternative Names	
Background	This gene encodes a member of the WWC family of proteins, which also includes the WWC1 (KIBRA) gene product and the WWC2 gene product. The protein encoded by this gene includes a C2 domain, which is known to mediate homodimerization in the related WWC1 gene product. [provided by RefSeq, Sep 2011],





**ELK Biotechnology**



Western blot analysis of lysates from KB cells, primary antibody was diluted at 1:1000, 4° over night



+86-27-59760950

ELKbio@ELKbiotech.com

[www.elkbiotech.com](http://www.elkbiotech.com)

23-2, No.388 Gaoxin 2nd Road, Wuhan East Lake Hi-tech Development Zone, Hubei, P.R.C.