

S35B2 rabbit pAb

Cat No.:ES10769

For research use only

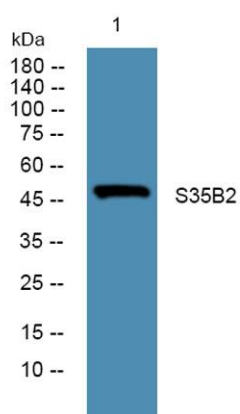
Overview

Product Name	S35B2 rabbit pAb
Host species	Rabbit
Applications	WB;ELISA
Species Cross-Reactivity	Human;Mouse
Recommended dilutions	WB 1:500-2000 ELISA 1:5000-20000
Immunogen	Synthesized peptide derived from part region of human protein
Specificity	S35B2 Polyclonal Antibody detects endogenous levels of protein.
Formulation	Liquid in PBS containing 50% glycerol, 0.5% BSA and 0.02% sodium azide.
Storage	Store at -20°C. Avoid repeated freeze-thaw cycles.
Protein Name	Adenosine 3'-phospho 5'-phosphosulfate transporter 1 (PAPS transporter 1) (Putative MAPK-activating protein PM15) (Putative NF-kappa-B-activating protein 48) (Solute carrier family 35 member B2)
Gene Name	SLC35B2 PAPST1 PSEC0149
Cellular localization	Golgi apparatus membrane ; Multi-pass membrane protein .
Purification	The antibody was affinity-purified from rabbit antiserum by affinity-chromatography using epitope-specific immunogen.
Clonality	Polyclonal
Concentration	1 mg/ml
Observed band	47kD
Human Gene ID	347734
Human Swiss-Prot Number	Q8TB61
Alternative Names	
Background	Sulfotransferases (e.g., SULT4A1; MIM 608359) use an activated form of sulfate, 3-prime-phosphoadenosine 5-prime-phosphosulfate (PAPS), as a common sulfate donor for sulfation of





glycoproteins, proteoglycans, and glycolipids in the endoplasmic reticulum and Golgi apparatus. SLC35B2 is located in the microsomal membrane and transports PAPS from the cytosol, where it is synthesized, into the Golgi lumen (Kamiyama et al., 2003 [PubMed 12716889]).[supplied by OMIM, Mar 2008],



Western blot analysis of lysates from DU145 cells, primary antibody was diluted at 1:1000, 4°over night

