

IN35 rabbit pAb

Cat No.:ES10712

For research use only

Overview

Product Name	IN35 rabbit pAb
Host species	Rabbit
Applications	WB;ELISA
Species Cross-Reactivity	Human;Rat;Mouse;
Recommended dilutions	WB 1:500-2000 ELISA 1:5000-20000
Immunogen	Synthesized peptide derived from part region of human protein
Specificity	IN35 Polyclonal Antibody detects endogenous levels of protein.
Formulation	Liquid in PBS containing 50% glycerol, 0.5% BSA and 0.02% sodium azide.
Storage	Store at -20°C. Avoid repeated freeze-thaw cycles.
Protein Name	Interferon-induced 35 kDa protein (IFP 35) (Ifi-35)
Gene Name	IFI35 IFP35
Cellular localization	Cytoplasm . Nucleus . Secreted . Cytoplasmic IFI35 localizes in punctate granular structures (PubMed:10950963). Nuclear localization increased is stimulated by IFN-alpha (PubMed:8288566, PubMed:10950963). Extracellular following secretion by macrophage (P
Purification	The antibody was affinity-purified from rabbit antiserum by affinity-chromatography using epitope-specific immunogen.
Clonality	Polyclonal
Concentration	1 mg/ml
Observed band	31kD
Human Gene ID	3430
Human Swiss-Prot Number	P80217
Alternative Names	
Background	function:Not yet known.,induction:By interferon gamma.,similarity:Belongs to the NMI family.,subcellular location:Nuclear following IFN treatment.,subunit:Homodimer. Also interacts with

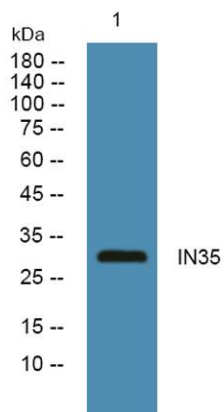




ELK Biotechnology

B-ATF.,tissue specificity:In a wide range of cell types, including fibroblasts, macrophages, and epithelial cells.,

Western blot analysis of lysates from KB cells, primary antibody was diluted at 1:1000, 4°over night



+86-27-59760950

ELKbio@ELKbiotech.com

www.elkbiotech.com

23-2, No.388 Gaoxin 2nd Road,Wuhan East Lake Hi-tech Development Zone, Hubei , P.R.C