



TRI31 rabbit pAb

Cat No.:ES10645

For research use only

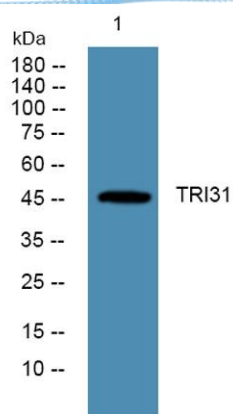
Overview

Product Name	TRI31 rabbit pAb
Host species	Rabbit
Applications	WB;ELISA
Species Cross-Reactivity	Human;Rat;Mouse;
Recommended dilutions	WB 1:500-2000 ELISA 1:5000-20000
Immunogen	Synthesized peptide derived from part region of human protein
Specificity	TRI31 Polyclonal Antibody detects endogenous levels of protein.
Formulation	Liquid in PBS containing 50% glycerol, 0.5% BSA and 0.02% sodium azide.
Storage	Store at -20°C. Avoid repeated freeze-thaw cycles.
Protein Name	E3 ubiquitin-protein ligase TRIM31 (EC 6.3.2.-) (Tripartite motif-containing protein 31)
Gene Name	TRIM31 C6orf13 RNF
Cellular localization	Cytoplasm . Mitochondrion . Predominantly expressed in the cytoplasm but a fraction is associated with the mitochondria.
Purification	The antibody was affinity-purified from rabbit antiserum by affinity-chromatography using epitope-specific immunogen.
Clonality	Polyclonal
Concentration	1 mg/ml
Observed band	46kD
Human Gene ID	11074
Human Swiss-Prot Number	Q9BZY9
Alternative Names	
Background	This gene encodes a protein that functions as an E3 ubiquitin-protein ligase. This gene shows altered expression in certain tumors and may be a negative regulator of cell growth. Alternative splicing results in multiple transcript variants. [provided by RefSeq, Jan 2016],





ELK Biotechnology



Western blot analysis of lysates from KB cells, primary antibody was diluted at 1:1000, 4° over night



+86-27-59760950

ELKbio@ELKbiotech.com

www.elkbiotech.com

23-2, No.388 Gaoxin 2nd Road, Wuhan East Lake Hi-tech Development Zone, Hubei, P.R.C.