

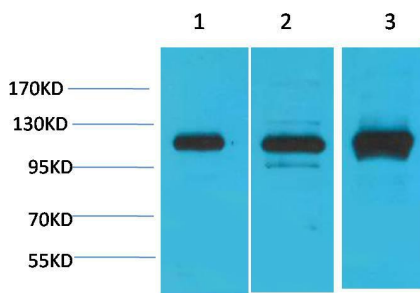


ELK Biotechnology

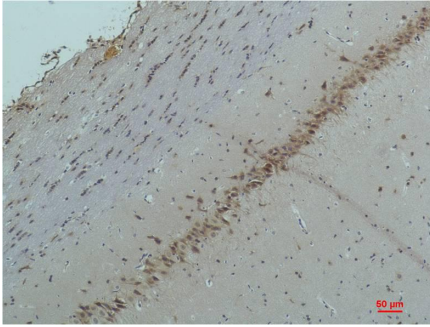
CaV α 2 δ 2 Rabbit pAb
Catalog NO.: EA268
For research use only.

Overview

Product name	CaV α 2 δ 2 Rabbit polyclonal antibody
Source	Rabbit
Applications	WB, IHC
Species reactivity	Human, Rat, Mouse
Recommended dilutions	WesternBlot:1/1000-2000 Immunohistochemistry:1/100-200 NOTE: Optimal dilutions should be determined by the end user.
Immunogen	Synthetic Peptide
Species	Human
Storage	PBS with 0.02% sodium azide and 50% glycerol pH 7.4. Store at -20° C. Avoid repeated freeze-thaw cycles.
Isotype	IgG
Clonality	Polyclonal
Concentration	1 mg/ml
Observed band	100-120kDa
GeneID (Human)	9254
Human Swiss-Prot No.	Q9NY47
Cellular localization	Membrane
Alternative Names	Voltage-dependent calcium channel subunit alpha-2/delta-2 antibody, CACNA2D antibody
Background	Voltage-gated Ca ²⁺ channels (CaV), enable the passage of Ca ²⁺ ions in a voltage dependent manner. These heteromeric entities are formed in part by the pore-forming α 1 subunit which determines the biophysical and pharmacological properties of the channel



Western blot analysis of 1)293T, 2)Mouse Brain Tissue, 3) Rat Brain Tissue with CABP2 Rabbit pAb EA268 diluted at 1:2,000.



Immunohistochemical analysis of paraffin-embedded Rat Brain Tissue using CaV α2δ2 (EA268) Rabbit pAb diluted at 1:200.