



ELK Biotechnology

mCherry-Tag Mouse pAb

Catalog NO.: EA012

For research use only.

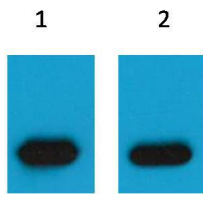
Overview

Product name	mCherry-Tag Mouse polyclonal antibody
Source	Mouse
Applications	WB, IP, IF
Species reactivity	N/A
Recommended dilutions	WesternBlot:1/5000 Immunofluorescence:1/200 Immunohistochemistry:1/200 Immunoprecipitation:1/100 NOTE: Optimal dilutions should be determined by the end user.

Immunogen	Recombinant Protein
Species	N/A
Storage	PBS with 0.02% sodium azide and 50% glycerol pH 7.4. Store at -20° C. Avoid repeated freeze-thaw cycles.
Isotype	IgG
Clonality	Polyclonal
Concentration	1 mg/ml
Observed band	N/A
GeneID (Human)	N/A
Human Swiss-Prot No.	N/A
Cellular localization	N/A
Alternative Names	N/A

Background mCherry is a fluorophore (a fluorescent molecule) used in biotechnology as a tracer to follow the flow of fluids, as a marker when tagged to molecules and cells components. mCherry is a monomeric fluorescent construct with peak absorption/emission at 587 nm and 610 nm, respectively. It is resistant to photobleaching and is stable. mCherry is sometimes preferred to other

fluorophores due to its colour, as well as its photostability compared to other monomeric fluorophores.



Western blot analysis of mCherry Recombinant protein with EA012 diluted at 1) 1:5,000 2) 1:10,000