



# ELK Biotechnology

## Pan Methylated Lysine Mouse mAb

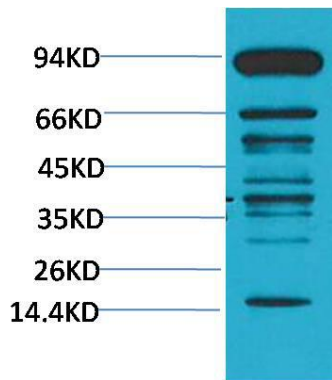
Catalog NO.: EM1186

For research use only.

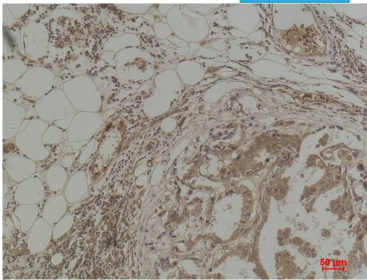
### Overview

---

Product name	Pan Methylated Lysine Mouse Monoclonal antibody
Source	Mouse
Applications	<b>WB IHC</b>
Species reactivity	<b>N/A</b>
Recommended dilutions	<b>WesternBlot:1/1000-2000</b> <b>Immunohistochemistry:1/200-500</b> <b>NOTE: Optimal dilutions should be determined by the end user.</b>
Immunogen	Conjugated Protein
Species	N/A
Storage	PBS with 0.02% sodium azide and 50% glycerol pH 7.4. Store at -20° C. Avoid repeated freeze-thaw cycles.
Isotype	IgG1
Clonality	Monoclonal
Concentration	1 mg/ml
Observed band	<b>N/A</b>
GeneID (Human)	N/A
Human Swiss-Prot No.	N/A
Cellular localization	N/A
Alternative Names	N/A
Background	Many proteins are post translationally modified. Modifications such as phosphorylation glycosylation ubiquitination and methylation have been shown to play an important role in the development physiology and disease of animals and plants.



Western blot analysis of HeLa with Pan Methylated Lysine Mouse mAb EM1186 diluted at:2000.



Immunohistochemical analysis of paraffin-embedded Human Breast Carcinoma using Pan Methylated Lysine (EM1186) Mouse mAb diluted at:500.