



ELK Biotechnology

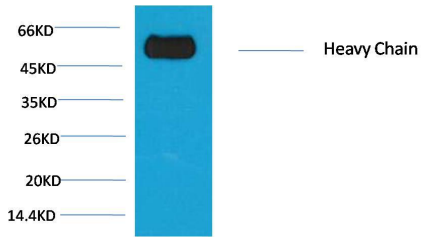
Rabbit IgG(Fc specificHeavy Chain) Mouse mAb

Catalog NO.: EM1168

For research use only.

Overview

Product name	Rabbit IgG(Fc specificHeavy Chain) Mouse Monoclonal antibody
Source	Mouse
Applications	WB IHC
Species reactivity	Rat
Recommended dilutions	WesternBlot:1/5000-20000 Immunohistochemistry:1/200-500 NOTE: Optimal dilutions should be determined by the end user.
Immunogen	Recombinant Protein
Species	Rabbit
Storage	PBS with 0.02% sodium azide and 50% glycerol pH 7.4. Store at -20° C. Avoid repeated freeze-thaw cycles.
Isotype	IgG1
Clonality	Monoclonal
Concentration	1 mg/ml
Observed band	55kDa
GeneID (Human)	N/A
Human Swiss-Prot No.	N/A
Cellular localization	N/A
Alternative Names	N/A
Background	The antibody reacts with the Fc portion of rabbit IgG heavy chain but not with the Fab portion of rabbit immunoglobulins. The antibody may cross-react with immunoglobulins from other species.



Western blot analysis of Reduced Rabbit IgG H+L with EM1168 diluted at:10000.