



PAR6G rabbit pAb

Cat No.:ES9974

For research use only

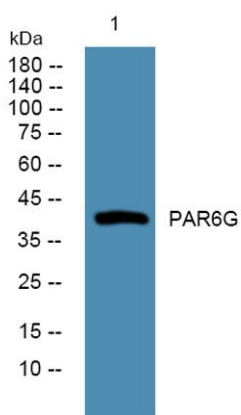
Overview

Product Name	PAR6G rabbit pAb
Host species	Rabbit
Applications	WB;ELISA
Species Cross-Reactivity	Human;Mouse
Recommended dilutions	WB 1:500-2000 ELISA 1:5000-20000
Immunogen	Synthesized peptide derived from human protein . at AA range: 240-320
Specificity	PAR6G Polyclonal Antibody detects endogenous levels of protein.
Formulation	Liquid in PBS containing 50% glycerol, 0.5% BSA and 0.02% sodium azide.
Storage	Store at -20°C. Avoid repeated freeze-thaw cycles.
Protein Name	Partitioning defective 6 homolog gamma (PAR-6 gamma) (PAR6D)
Gene Name	PAR6G PAR6G
Cellular localization	Cytoplasm. Cell membrane . Cell junction, tight junction .
Purification	The antibody was affinity-purified from rabbit antiserum by affinity-chromatography using epitope-specific immunogen.
Clonality	Polyclonal
Concentration	1 mg/ml
Observed band	41kD
Human Gene ID	84552
Human Swiss-Prot Number	Q9BYG4
Alternative Names	
Background	domain:The pseudo-CRIB domain together with the PDZ domain is required for the interaction with Rho small GTPases.,function:Adapter protein involved in asymmetrical cell division and cell polarization processes. May play a role in the formation of epithelial tight junctions. The PARD6-PARD3 complex links GTP-bound Rho small GTPases to





atypical protein kinase C proteins.,similarity:Belongs to the PAR6 family.,similarity:Contains 1 OPR domain.,similarity:Contains 1 PDZ (DHR) domain.,similarity:Contains 1 pseudo-CRIB domain.,subunit:Interacts with PARD3 (Probable). Interacts with GTP-bound forms of CDC42, ARHQ/TC10 and RAC1. Interacts with the N-terminal part of PRKCI and PRKCZ.,tissue specificity:Widely expressed, with a higher expression in fetal and adult kidney.,



Western blot analysis of lysates from HCT116 cells,
primary antibody was diluted at 1:1000, 4°over night

