



ZDH18 rabbit pAb

Cat No.:ES9972

For research use only

Overview

Product Name	ZDH18 rabbit pAb
Host species	Rabbit
Applications	WB;ELISA
Species Cross-Reactivity	Human;Mouse;Rat
Recommended dilutions	WB 1:500-2000 ELISA 1:5000-20000
Immunogen	Synthesized peptide derived from human protein . at AA range: 20-100
Specificity	ZDH18 Polyclonal Antibody detects endogenous levels of protein.
Formulation	Liquid in PBS containing 50% glycerol, 0.5% BSA and 0.02% sodium azide.
Storage	Store at -20°C. Avoid repeated freeze-thaw cycles.
Protein Name	Palmitoyltransferase ZDHHC18 (EC 2.3.1.-) (Zinc finger DHHC domain-containing protein 18) (DHHC-18)
Gene Name	ZDHHC18
Cellular localization	Golgi apparatus membrane ; Multi-pass membrane protein .
Purification	The antibody was affinity-purified from rabbit antiserum by affinity-chromatography using epitope-specific immunogen.
Clonality	Polyclonal
Concentration	1 mg/ml
Observed band	42kD
Human Gene ID	84243
Human Swiss-Prot Number	Q9NUE0
Alternative Names	
Background	catalytic activity:Palmitoyl-CoA + protein-cysteine = S-palmitoyl protein + CoA.,domain:The DHHC domain is required for palmitoyltransferase activity.,function:Has palmitoyltransferase activity towards HRAS and LCK.,similarity:Belongs to the DHHC palmitoyltransferase family. ERF2/ZDHHC9

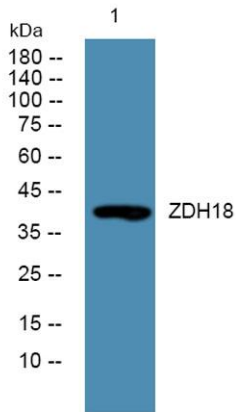




ELK Biotechnology

subfamily.,similarity:Contains 1 DHHC-type zinc finger.,

Western blot analysis of lysates from Jarkat cells, primary antibody was diluted at 1:1000, 4°over night



+86-27-59760950

ELKbio@ELKbiotech.com

www.elkbiotech.com

23-2, No.388 Gaoxin 2nd Road,Wuhan East Lake Hi-tech Development Zone, Hubei , P.R.C