



NPW rabbit pAb

Cat No.:ES9924

For research use only

Overview

Product Name	NPW rabbit pAb
Host species	Rabbit
Applications	WB;ELISA
Species Cross-Reactivity	Human;Rat
Recommended dilutions	WB 1:500-2000 ELISA 1:5000-20000
Immunogen	Synthesized peptide derived from human protein . at AA range: 90-170
Specificity	NPW Polyclonal Antibody detects endogenous levels of protein.
Formulation	Liquid in PBS containing 50% glycerol, 0.5% BSA and 0.02% sodium azide.
Storage	Store at -20°C. Avoid repeated freeze-thaw cycles.
Protein Name	Neuropeptide W (Preproprotein L8) (hPPL8) [Cleaved into: Neuropeptide W-23 (NPW23) (hL8); Neuropeptide W-30 (NPW30) (hL8C)]
Gene Name	NPW PPL8 PPNPW
Cellular localization	Secreted.
Purification	The antibody was affinity-purified from rabbit antiserum by affinity-chromatography using epitope-specific immunogen.
Clonality	Polyclonal
Concentration	1 mg/ml
Observed band	18kD
Human Gene ID	283869
Human Swiss-Prot Number	Q8N729
Alternative Names	
Background	The product of this gene is processed into 23- and 30-amino acid neuropeptides that bind and activate two G-protein coupled receptors in the central nervous system. The neuropeptides have been shown to enhance cortisol secretion from adrenal cells through the adenylate cyclase/protein kinase A signaling cascade. The preproprotein is translated

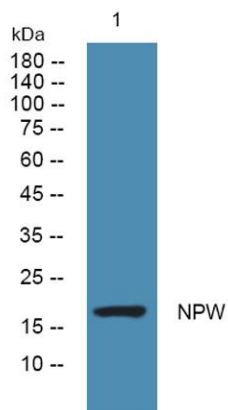




ELK Biotechnology

using a non-AUG initiation codon that is inferred from analyses of the mouse ortholog. [provided by RefSeq, Jul 2008],

Western blot analysis of lysates from PC12 cells, primary antibody was diluted at 1:1000, 4° over night



+86-27-59760950

ELKbio@ELKbiotech.com

www.elkbiotech.com

23-2, No.388 Gaoxin 2nd Road, Wuhan East Lake Hi-tech Development Zone, Hubei, P.R.C