



NGDN rabbit pAb

Cat No.:ES9910

For research use only

Overview

Product Name	NGDN rabbit pAb
Host species	Rabbit
Applications	WB;ELISA
Species Cross-Reactivity	Human;Mouse
Recommended dilutions	WB 1:500-2000 ELISA 1:5000-20000
Immunogen	Synthesized peptide derived from human protein . at AA range: 240-320
Specificity	NGDN Polyclonal Antibody detects endogenous levels of protein.
Formulation	Liquid in PBS containing 50% glycerol, 0.5% BSA and 0.02% sodium azide.
Storage	Store at -20°C. Avoid repeated freeze-thaw cycles.
Protein Name	Neuroguidin (EIF4E-binding protein)
Gene Name	NGDN C14orf120
Cellular localization	Nucleus . Nucleus, nucleolus . Chromosome, centromere . Cytoplasm . Cell projection, axon . Cell projection, dendrite . Cell projection, filopodium . Detected in axons, dendrites and filopodia. Colocalized with EIF4E in neurites (By similarity). Transloca
Purification	The antibody was affinity-purified from rabbit antiserum by affinity-chromatography using epitope-specific immunogen.
Clonality	Polyclonal
Concentration	1 mg/ml
Observed band	34kD
Human Gene ID	25983
Human Swiss-Prot Number	Q8NEJ9
Alternative Names	
Background	Neuroguidin is an EIF4E (MIM 133440)-binding protein that interacts with CPEB (MIM 607342) and functions as a translational regulatory protein during development of the vertebrate nervous system

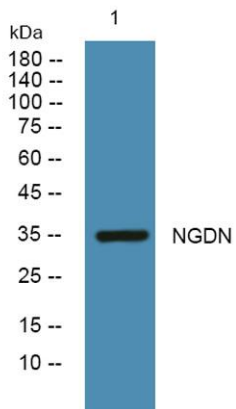




ELK Biotechnology

(Jung et al., 2006 [PubMed 16705177]).[supplied by OMIM, Mar 2008],

Western blot analysis of lysates from U2OS cells, primary antibody was diluted at 1:1000, 4° over night



+86-27-59760950

ELKbio@ELKbiotech.com

www.elkbiotech.com

23-2, No.388 Gaoxin 2nd Road, Wuhan East Lake Hi-tech Development Zone, Hubei, P.R.C