



NB5R2 rabbit pAb

Cat No.:ES9881

For research use only

Overview

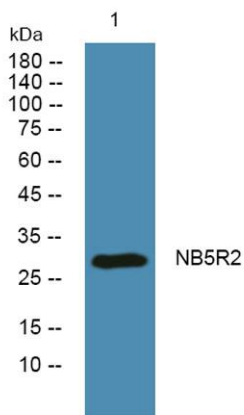
Product Name	NB5R2 rabbit pAb
Host species	Rabbit
Applications	WB;ELISA
Species Cross-Reactivity	Human;Rat;Mouse
Recommended dilutions	WB 1:500-2000 ELISA 1:5000-20000
Immunogen	Synthesized peptide derived from human protein . at AA range: 120-200
Specificity	NB5R2 Polyclonal Antibody detects endogenous levels of protein.
Formulation	Liquid in PBS containing 50% glycerol, 0.5% BSA and 0.02% sodium azide.
Storage	Store at -20°C. Avoid repeated freeze-thaw cycles.
Protein Name	NADH-cytochrome b5 reductase 2 (b5R.2) (EC 1.6.2.2)
Gene Name	CYB5R2
Cellular localization	nucleus,mitochondrion,endoplasmic reticulum membrane,membrane,integral component of membrane,
Purification	The antibody was affinity-purified from rabbit antiserum by affinity-chromatography using epitope-specific immunogen.
Clonality	Polyclonal
Concentration	1 mg/ml
Observed band	30kD
Human Gene ID	51700
Human Swiss-Prot Number	Q6BCY4
Alternative Names	
Background	The protein encoded by this gene belongs to the flavoprotein pyridine nucleotide cytochrome reductase family of proteins. Cytochrome b-type NAD(P)H oxidoreductases are implicated in many processes including cholesterol biosynthesis, fatty acid desaturation and elongation, and respiratory





ELK Biotechnology

burst in neutrophils and macrophages. Cytochrome b5 reductases have soluble and membrane-bound forms that are the product of alternative splicing. In animal cells, the membrane-bound form binds to the endoplasmic reticulum, where it is a member of a fatty acid desaturation complex. Alternative splicing results in multiple transcript variants. [provided by RefSeq, Nov 2014],



Western blot analysis of lysates from K562 cells, primary antibody was diluted at 1:1000, 4° over night



+86-27-59760950

ELKbio@ELKbiotech.com

www.elkbiotech.com

23-2, No.388 Gaoxin 2nd Road, Wuhan East Lake Hi-tech Development Zone, Hubei, P.R.C