



NDUB7 rabbit pAb

Cat No.:ES9875

For research use only

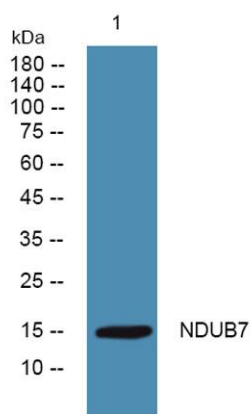
Overview

Product Name	NDUB7 rabbit pAb
Host species	Rabbit
Applications	WB;ELISA
Species Cross-Reactivity	Human;Mouse
Recommended dilutions	WB 1:500-2000 ELISA 1:5000-20000
Immunogen	Synthesized peptide derived from human protein . at AA range: 20-100
Specificity	NDUB7 Polyclonal Antibody detects endogenous levels of protein.
Formulation	Liquid in PBS containing 50% glycerol, 0.5% BSA and 0.02% sodium azide.
Storage	Store at -20°C. Avoid repeated freeze-thaw cycles.
Protein Name	NADH dehydrogenase [ubiquinone] 1 beta subcomplex subunit 7 (Cell adhesion protein SQM1) (Complex I-B18) (CI-B18) (NADH-ubiquinone oxidoreductase B18 subunit)
Gene Name	NDUFB7
Cellular localization	Mitochondrion inner membrane ; Peripheral membrane protein . Mitochondrion intermembrane space .
Purification	The antibody was affinity-purified from rabbit antiserum by affinity-chromatography using epitope-specific immunogen.
Clonality	Polyclonal
Concentration	1 mg/ml
Observed band	15kD
Human Gene ID	4713
Human Swiss-Prot Number	P17568
Alternative Names	
Background	The protein encoded by this gene is a subunit of the multisubunit NADH:ubiquinone oxidoreductase (complex I). Mammalian complex I is composed of 45 different subunits. It is located at the





mitochondrial inner membrane. This protein has NADH dehydrogenase activity and oxidoreductase activity. It transfers electrons from NADH to the respiratory chain. The immediate electron acceptor for the enzyme is believed to be ubiquinone. [provided by RefSeq, Jul 2008],



Western blot analysis of lysates from PC12 cells, primary antibody was diluted at 1:1000, 4° over night

