



# MLL2 rabbit pAb

Cat No.:ES9840

For research use only

## Overview

|                                 |  |
|---------------------------------|--|
| <b>Product Name</b>             | MLL2 rabbit pAb  |
| <b>Host species</b>             | Rabbit   |
| <b>Applications</b>             | IHC;IF   |
| <b>Species Cross-Reactivity</b> | Human;Rat;Mouse;   |
| <b>Recommended dilutions</b>    | IHC-p 1:50-300   |
| <b>Immunogen</b>                | Synthesized peptide derived from human protein .<br>at AA range: 1430-1510   |
| <b>Specificity</b>              | MLL2 Polyclonal Antibody detects endogenous<br>levels of protein.  |
| <b>Formulation</b>              | Liquid in PBS containing 50% glycerol, 0.5% BSA and<br>0.02% sodium azide.   |
| <b>Storage</b>                  | Store at -20°C. Avoid repeated freeze-thaw cycles.   |
| <b>Protein Name</b>             | Histone-lysine N-methyltransferase MLL2 (EC<br>2.1.1.43) (ALL1-related protein) (Lysine<br>N-methyltransferase 2D) (KMT2D)<br>(Myeloid/lymphoid or mixed-lineage leukemia<br>protein 2)  |
| <b>Gene Name</b>                | MLL2 ALR KMT2D MLL4  |
| <b>Cellular localization</b>    | Nucleus .  |
| <b>Purification</b>             | The antibody was affinity-purified from rabbit<br>antiserum by affinity-chromatography using<br>epitope-specific immunogen.  |
| <b>Clonality</b>                | Polyclonal   |
| <b>Concentration</b>            | 1 mg/ml  |
| <b>Observed band</b>            | 609kD  |
| <b>Human Gene ID</b>            | 8085   |
| <b>Human Swiss-Prot Number</b>  | O14686   |
| <b>Alternative Names</b>        |  |
| <b>Background</b>               | The protein encoded by this gene is a histone<br>methyltransferase that methylates the Lys-4 position<br>of histone H3. The encoded protein is part of a large<br>protein complex called ASCOM, which has been<br>shown to be a transcriptional regulator of the |

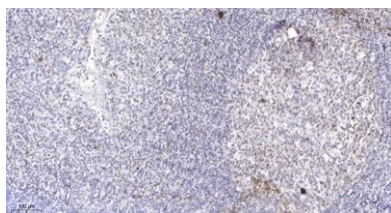




**ELK Biotechnology**

beta-globin and estrogen receptor genes. Mutations in this gene have been shown to be a cause of Kabuki syndrome. [provided by RefSeq, Oct 2010],

Immunohistochemical analysis of paraffin-embedded human tonsil. 1, Antibody was diluted at 1:200(4° overnight). 2, Tris-EDTA,pH9.0 was used for antigen retrieval. 3,Secondary antibody was diluted at 1:200(room temperature, 45min).



+86-27-59760950

[ELKbio@ELKbiotech.com](mailto:ELKbio@ELKbiotech.com)

[www.elkbiotech.com](http://www.elkbiotech.com)

23-2, No.388 Gaoxin 2nd Road,Wuhan East Lake Hi-tech Development Zone, Hubei , P.R.C