



MPP8 rabbit pAb

Cat No.:ES9822

For research use only

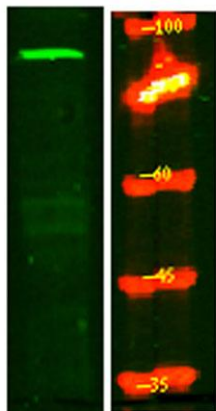
Overview

Product Name	MPP8 rabbit pAb
Host species	Rabbit
Applications	WB;ELISA
Species Cross-Reactivity	Human;Rat;Mouse
Recommended dilutions	WB 1:500-2000 ELISA 1:5000-20000
Immunogen	Synthesized peptide derived from human protein . at AA range: 290-370
Specificity	MPP8 Polyclonal Antibody detects endogenous levels of protein.
Formulation	Liquid in PBS containing 50% glycerol, 0.5% BSA and 0.02% sodium azide.
Storage	Store at -20°C. Avoid repeated freeze-thaw cycles.
Protein Name	M-phase phosphoprotein 8 (Two hybrid-associated protein 3 with RanBPM) (Twa3)
Gene Name	MPHOSPH8 MPP8
Cellular localization	Nucleus . Chromosome . Detected on heterochromatin (PubMed:20871592, PubMed:26022416). Dissociates from chromatin during interphase and early mitosis (PubMed:23416073). Detected on nucleosomes (PubMed:20871592)..
Purification	The antibody was affinity-purified from rabbit antiserum by affinity-chromatography using epitope-specific immunogen.
Clonality	Polyclonal
Concentration	1 mg/ml
Observed band	94kD
Human Gene ID	54737
Human Swiss-Prot Number	Q99549
Alternative Names	
Background	PTM:Phosphorylated in M (mitotic) phase.,similarity:Contains 1 chromo domain.,similarity:Contains 4 ANK repeats.,





ELK Biotechnology



Western Blot analysis of HeLa lysis, using primary antibody at 1:1000 dilution. Secondary antibody(catalog#:RS23920) was diluted at 1:10000



+86-27-59760950

ELKbio@ELKbiotech.com

www.elkbiotech.com

23-2, No.388 Gaoxin 2nd Road,Wuhan East Lake Hi-tech Development Zone, Hubei , P.R.C