



IMP2L rabbit pAb

Cat No.:ES9811

For research use only

Overview

Product Name	IMP2L rabbit pAb
Host species	Rabbit
Applications	WB;ELISA
Species Cross-Reactivity	Human;Mouse
Recommended dilutions	WB 1:500-2000 ELISA 1:5000-20000
Immunogen	Synthesized peptide derived from human protein . at AA range: 30-110
Specificity	IMP2L Polyclonal Antibody detects endogenous levels of protein.
Formulation	Liquid in PBS containing 50% glycerol, 0.5% BSA and 0.02% sodium azide.
Storage	Store at -20°C. Avoid repeated freeze-thaw cycles.
Protein Name	Mitochondrial inner membrane protease subunit 2 (EC 3.4.21.-) (IMP2-like protein)
Gene Name	IMMP2L
Cellular localization	Mitochondrion inner membrane ; Single-pass membrane protein .
Purification	The antibody was affinity-purified from rabbit antiserum by affinity-chromatography using epitope-specific immunogen.
Clonality	Polyclonal
Concentration	1 mg/ml
Observed band	19kD
Human Gene ID	83943
Human Swiss-Prot Number	Q96T52
Alternative Names	
Background	This gene encodes a protein involved in processing the signal peptide sequences used to direct mitochondrial proteins to the mitochondria. The encoded protein resides in the mitochondria and is one of the necessary proteins for the catalytic activity of the mitochondrial inner membrane peptidase (IMP) complex. Two variants that encode

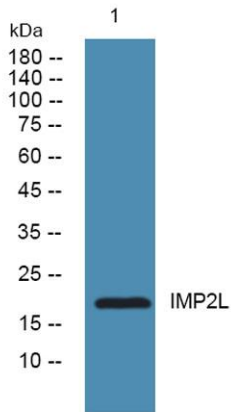




ELK Biotechnology

the same protein have been described for this gene.
[provided by RefSeq, Sep 2011],

Western blot analysis of lysates from Jarkat cells, primary
antibody was diluted at 1:1000, 4° over night



+86-27-59760950

ELKbio@ELKbiotech.com

www.elkbiotech.com

23-2, No.388 Gaoxin 2nd Road, Wuhan East Lake Hi-tech Development Zone, Hubei, P.R.C.