



MED22 rabbit pAb

Cat No.:ES9788

For research use only

Overview

Product Name	MED22 rabbit pAb
Host species	Rabbit
Applications	WB;ELISA
Species Cross-Reactivity	Human;Mouse;Rat
Recommended dilutions	WB 1:500-2000 ELISA 1:5000-20000
Immunogen	Synthesized peptide derived from human protein . at AA range: 10-90
Specificity	MED22 Polyclonal Antibody detects endogenous levels of protein.
Formulation	Liquid in PBS containing 50% glycerol, 0.5% BSA and 0.02% sodium azide.
Storage	Store at -20°C. Avoid repeated freeze-thaw cycles.
Protein Name	Mediator of RNA polymerase II transcription subunit 22 (Mediator complex subunit 22) (Surfeit locus protein 5) (Surf-5)
Gene Name	MED22 SURF5
Cellular localization	Nucleus .
Purification	The antibody was affinity-purified from rabbit antiserum by affinity-chromatography using epitope-specific immunogen.
Clonality	Polyclonal
Concentration	1 mg/ml
Observed band	22kD
Human Gene ID	6837
Human Swiss-Prot Number	Q15528
Alternative Names	
Background	This gene encodes a protein component of the mediator complex, which functions in the regulation of transcription by bridging interactions between gene-specific regulatory factors, RNA polymerase II, and general transcription factors. Alternatively spliced transcript variants encoding different isoforms have been observed. [provided by RefSeq,

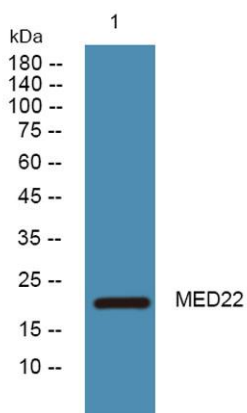




ELK Biotechnology

Jul 2013],

Western blot analysis of lysates from SW480 cells, primary antibody was diluted at 1:1000, 4° over night



+86-27-59760950

ELKbio@ELKbiotech.com

www.elkbiotech.com

23-2, No.388 Gaoxin 2nd Road, Wuhan East Lake Hi-tech Development Zone, Hubei, P.R.C