



LIN7A rabbit pAb

Cat No.:ES9767

For research use only

Overview

Product Name	LIN7A rabbit pAb
Host species	Rabbit
Applications	WB;ELISA
Species Cross-Reactivity	Human;Rat;Mouse
Recommended dilutions	WB 1:500-2000 ELISA 1:5000-20000
Immunogen	Synthesized peptide derived from human protein . at AA range: 10-90
Specificity	LIN7A Polyclonal Antibody detects endogenous levels of protein.
Formulation	Liquid in PBS containing 50% glycerol, 0.5% BSA and 0.02% sodium azide.
Storage	Store at -20°C. Avoid repeated freeze-thaw cycles.
Protein Name	Protein lin-7 homolog A (Lin-7A) (hLin-7) (Mammalian lin-seven protein 1) (MALS-1) (Tax interaction protein 33) (TIP-33) (Vertebrate lin-7 homolog 1) (Veli-1)
Gene Name	LIN7A MALS1 VELI1
Cellular localization	Cell membrane ; Peripheral membrane protein . Basolateral cell membrane ; Peripheral membrane protein . Cell junction . Cell junction, synapse, postsynaptic density membrane ; Peripheral membrane protein . Cell junction, tight junction . Mainly basolatera
Purification	The antibody was affinity-purified from rabbit antiserum by affinity-chromatography using epitope-specific immunogen.
Clonality	Polyclonal
Concentration	1 mg/ml
Observed band	25kD
Human Gene ID	8825
Human Swiss-Prot Number	O14910
Alternative Names	
Background	The protein encoded by this gene is involved in

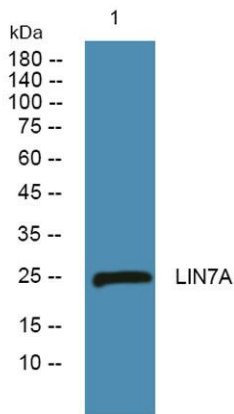




ELK Biotechnology

generating and maintaining the asymmetric distribution of channels and receptors at the cell membrane. The encoded protein also is required for the localization of some specific channels and can be part of a protein complex that couples synaptic vesicle exocytosis to cell adhesion in the brain. [provided by RefSeq, May 2016],

Western blot analysis of lysates from Jarkat cells, primary antibody was diluted at 1:1000, 4° over night



+86-27-59760950

ELKbio@ELKbiotech.com

www.elkbiotech.com

23-2, No.388 Gaoxin 2nd Road, Wuhan East Lake Hi-tech Development Zone, Hubei, P.R.C