



GUC2B rabbit pAb

Cat No.:ES9705

For research use only

Overview

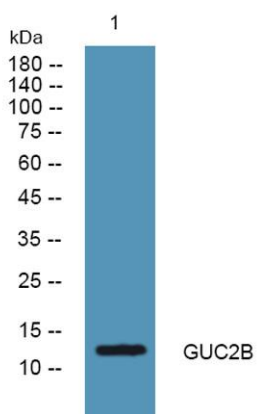
Product Name	GUC2B rabbit pAb
Host species	Rabbit
Applications	WB;ELISA
Species Cross-Reactivity	Human;Rat;Mouse;
Recommended dilutions	WB 1:500-2000 ELISA 1:5000-20000
Immunogen	Synthesized peptide derived from part region of human protein AA range: 1-50
Specificity	GUC2B Polyclonal Antibody detects endogenous levels of protein.
Formulation	Liquid in PBS containing 50% glycerol, 0.5% BSA and 0.02% sodium azide.
Storage	Store at -20°C. Avoid repeated freeze-thaw cycles.
Protein Name	Guanylate cyclase activator 2B [Cleaved into: Guanylate cyclase C-activating peptide 2 (Guanylate cyclase C-activating peptide II) (GCAP-II); Uroguanylin (UGN)]
Gene Name	GUCA2B
Cellular localization	Secreted.
Purification	The antibody was affinity-purified from rabbit antiserum by affinity-chromatography using epitope-specific immunogen.
Clonality	Polyclonal
Concentration	1 mg/ml
Observed band	12kD
Human Gene ID	2981
Human Swiss-Prot Number	Q16661
Alternative Names	
Background	This gene encodes a preproprotein that is proteolytically processed to generate multiple protein products, including uroguanylin, a member of the guanylin family of peptides and an endogenous ligand of the guanylate cyclase-C receptor. Binding of this peptide to its cognate





ELK Biotechnology

receptor stimulates an increase in cyclic GMP and may regulate salt and water homeostasis in the intestine and kidneys. [provided by RefSeq, Nov 2015],



Western blot analysis of lysates from K562 cells, primary antibody was diluted at 1:1000, 4° over night



+86-27-59760950

ELKbio@ELKbiotech.com

www.elkbiotech.com

23-2, No.388 Gaoxin 2nd Road, Wuhan East Lake Hi-tech Development Zone, Hubei, P.R.C