



GPSM3 rabbit pAb

Cat No.:ES9682

For research use only

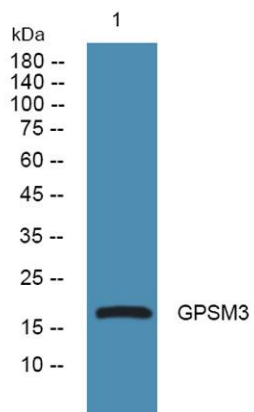
Overview

Product Name	GPSM3 rabbit pAb
Host species	Rabbit
Applications	WB;ELISA
Species Cross-Reactivity	Human;Mouse;Rat
Recommended dilutions	WB 1:500-2000 ELISA 1:5000-20000
Immunogen	Synthesized peptide derived from part region of human protein
Specificity	GPSM3 Polyclonal Antibody detects endogenous levels of protein.
Formulation	Liquid in PBS containing 50% glycerol, 0.5% BSA and 0.02% sodium azide.
Storage	Store at -20°C. Avoid repeated freeze-thaw cycles.
Protein Name	G-protein-signaling modulator 3 (Activator of G-protein signaling 4) (G18.1b) (Protein G18)
Gene Name	GPSM3 AGS4 C6orf9 G18
Cellular localization	Cytoplasm .
Purification	The antibody was affinity-purified from rabbit antiserum by affinity-chromatography using epitope-specific immunogen.
Clonality	Polyclonal
Concentration	1 mg/ml
Observed band	17kD
Human Gene ID	63940
Human Swiss-Prot Number	Q9Y4H4
Alternative Names	
Background	domain:The GoLoco 1 and/or GoLoco 3 domains exhibit GDI activity towards GDP-bound G(i) alpha protein, but not the GoLoco 2 domain.,function:Interacts with subunit of G(i) alpha proteins and regulates the activation of G(i) alpha proteins.,similarity:Contains 3 GoLoco domains.,tissue specificity:Expressed in heart, placenta, lung and liver.,





ELK Biotechnology



Western blot analysis of lysates from PC12 cells, primary antibody was diluted at 1:1000, 4° over night



+86-27-59760950

ELKbio@ELKbiotech.com

www.elkbiotech.com

23-2, No.388 Gaoxin 2nd Road, Wuhan East Lake Hi-tech Development Zone, Hubei, P.R.C